

# Town of Richmond Hill Inventory of Cultural Heritage Resources

Spring 2018





## Introduction

### What is this document?

The Richmond Hill Inventory of Cultural Heritage Resources provides key information on Richmond Hill's designated and listed properties that are of cultural heritage significance and/or interest. The document is used to assist in the identification of the Town's heritage resources based on the information known at the time of publishing.

### Designated properties

A property that has been individually identified under Part IV of the Ontario Heritage Act, or one that has been identified due to its location within a Heritage Conservation District (HCD) under Part V of the Ontario Heritage Act is referred to as being a "**designated**" property. Designated properties have protective by-laws registered on title, and the associated by-law numbers are noted in the entries.

### Listed properties

A listed property is a property that is believed to be of cultural heritage interest, but has not been fully evaluated for its cultural significance under the Ontario Heritage Act. A property may be added to the Inventory of Cultural Heritage Resources as a listed property through Council's direction.

## How to Use This Document

Entry Example				
169 Gormley Road West	1)		Ward 3	2)
Ida Manock Cook House	3)		DES	
			BP	
Frame; mixed, fieldstone on front; 2 storeys; 1930; Several additions to possible Homestead style house; asymmetrical front-gable projection with broad recessed entry porch under longer left-hand roof slope; large 4-ganged casement window. Outbuilding on property.				
For more information see designating by-law 150-09 (Gormley HCD)				

### 1. How the Inventory is Organized

Properties in this document are catalogued in alphabetical order based on their respective street addresses.

### 2. Property Status Information

The property's status (listed or designated), ward and plaques attributed to the property are noted after the property's address. WP refers to a wooden plaque, and BP refers to a bronze plaque. All designated buildings are given bronze plaques.

### 3. Property Names

The name(s) associated with the property are noted after the property's status, ward and plaques.

### 4. Property Description

General descriptions of each property are noted after the name(s) associated with the property, in the following order:

#### Construction

Where a building is known to be of

timber frame, solid brick, or brick veneer, such distinctions are given, otherwise the general terms of "frame" or 'brick' are used.

#### Exterior finish

The current exterior sheathing or finish. 'Brickclad' refers to a building that originally had another exterior, but at some time was faced with brick. Where an original or earlier finish is known, it is listed under historical data.

#### Storeys

Number of storeys in a structure.

#### Date

The date of construction. c refers to circa, and (v) refers to a verified date. For example, c1860 indicates an educated guess, c1860 (v) indicates that documentation shows a building being known to have been built around 1860, though the exact year is unknown, and 1860 (v) indicates that the building is known to have been built in 1860.

#### Plan

The basic plan of the building. If a building has significantly different components or is a combination of two or more joined buildings, the components are listed separately.

#### Architectural Style

If a building can be identified as being created in a particular

architectural style, a stylistic name is listed.

### **Significant Features**

Any distinctive built or landscape features on the property.

### **Owner/Occupant**

The owner(s) and/or occupant(s) of the building. The first name is given to the original owner(s), unless otherwise noted.

### **Builder/Architect**

The builder(s) and/or architect(s) of the building.

### **History**

Describes any significant owners, uses and/or other names associated with the property's history.

### **Alterations**

Describes any significant alterations and additions made to the structure,

as well as the structure's original form, style, and/or characteristics before the alterations were made.

### **Other Known Address**

The previously known addresses of a building if it has been relocated or if an address change has occurred.

### **Potential Heritage Interest**

Elements of potential heritage interest on the property besides the principal element, such as farm accessory structures.

## **5. Designated Properties**

If the property is designated under the Ontario Heritage Act, the corresponding designating by-law is listed after the property's general description. If the property is located within a Heritage Conservation District (HCD), the name of the HCD will be listed.

For more information on a specific property, please contact the Town's Heritage Planner.



## 18 Arnold Crescent

Ward 4  
WP

### Elmwood: William Pugsley House

Brick; red; 2 storeys; 1914(v); centre hall; Queen Anne Revival; gable roof with pent eave; gable-roofed dormer without side walls; patterned glass transoms in front windows; gable-roofed front porch on square pillars; shed-roofed east side verandah; 'Elmwood' in basement window lintel; built by William H. Graham for William H. Pugsley, butcher, councillor and reeve.



## 26 Arnold Crescent

Ward 4

### Herbert H. Hopper House

Brick; red, painted grey; 2 storeys; 1914(v); side hall; Foursquare; hip roof with hip-roofed front dormer; oval window with patterned glass; built by William H. Graham for Herbert H. Hopper; used as Veterinary hospital.



## 27 Arnold Crescent

Ward 4

### Mrs. Fred Lynett House

Brick; red; 1 ½ storeys; c1915 (v); side hall; Queen Anne Revival; gable front with pent eaves; shed-roofed verandah; built by William H. Graham for Mrs. Fred Lynett; Fred Lynette was manager of Richmond Hill Creamery; verandah now enclosed; used as dental office and molly maid service; large sign in front and between windows on 2nd storey; later date aluminum siding addition to north of house.



### 36 Arnold Crescent

Ward 4

#### John Rumble House

WP

Brick; red; 2 storeys; 1913(v); side hall; Foursquare; hip roof with hip-roofed front dormer and full pent-eaves gable at rear; 2 storey canted bay window on west side; hip-roofed verandah on Tuscan columns; built by John L Innes for John Rumble.



### 37 Arnold Crescent

Ward 4

DES

#### William Cooper House

BP

Frame; clapboard; 1 ½ storeys; c1860; 3-bay; gable roof; 1 ½ storeys & 1 storey rear wings; William Cooper. Originally full width hip-roofed verandah; replaced by 20th century porch with lion's head motif in pediment; shed-roofed front wall dormer added.

For more information see designating by-law 15-00



### 38 Arnold Crescent

Ward 4

#### Mrs. Joe Graham House

WP

Brick; red; 1 ½ storeys; c1915(v); L-shaped; Queen Anne Revival; gable roof with pent eaves; curved verandah on front and ell of east side; square tapered pillars on brick pedestals; built by John L. Innes for Mrs. Joe Graham.





**41 Arnold Crescent**      **Ward 4**  
**James Bell House**      **WP**

Frame; clapboard; 1 ½ storeys; c1880(v); gable front with side hall; transomed entry, boarded over; shed-roofed verandah on square tapered pillars; two 1 storey rear wings, stepped; James Bell, cooper; originally stucco.



**42 Arnold Crescent**      **Ward 4**  
**Louis Doner House**

Brick; brown; 2 storeys; c1913(v); side hall; Foursquare; hip roof with gable-roofed front dormer; oval window with plain glass; hip roofed verandah; built by William H. Graham for Louis Doner. Altered; verandah now partly enclosed, rest un-floored.



**47 Arnold Crescent**      **Ward 4**  
**Francis Wiley House**      **WP**

Frame; clapboard; 1 ½ storeys; c1882(v); 3-bay; 1 storey side wing; Sarah J. and Francis E. Wiley, carpenter, sexton of Methodist Church, village bell ringer. Originally gable front with side hall; altered to face Elizabeth Street South in 1940s, by Ada Mackenzie.





## 53 Arnold Crescent

Ward 4

DES

BP

**McNair-Stallibrass House**

Frame; narrow clapboard; 1 ½ storeys; c1879(v); L-shaped; gable roof; transformed entry; shed-roofed verandah on square, panelled pillars; closed panelled railings; 1 ½ storey rear wing and 1 storey shed wing; built by Matthew McNair. Renovated c1920 by John Stallibrass.

For more information see designating by-law 133-95



## 59 Arnold Crescent

Ward 4

**John Sims House**

Frame; aluminum siding; 1 ½ storeys; c1877(v); centre hall; 3-bay; gable roof; 1 ½ storey rear wing; John Sims, blacksmith. Previously pressed tin siding; 1 storey rear addition.



## 63 Arnold Crescent

Ward 4

**Robert Dean House**

WP

Frame; aluminum siding; 1 ½ storeys; 1915(v); side hall; Bungalow Cottage; gable roof with pent eaves; gable-roofed front dormer with pediment; verandah under main roof, on square pillars; William H. Graham, builder, to Robert Dean.



## 67 Arnold Crescent

Ward 4

### Dell-Beresford House

WP

Frame; asbestos shingles; 1 ½ storeys; c1916 and c1926(v); gable front with side hall; panelled fascia; shed-roofed verandah with Tudor and Classical detailing & offset gable over entry, on tapered & panelled pillars; 1 storey shed-roofed rear wing; lower storey built by William H. Graham, c1916; upper storey built by Mr. Joseph Monkman, c1926.



## 77 Arnold Crescent

Ward 4

DES

BP

### Hopkins Creamery - Yellow Briar Cottage

Concrete and frame; stucco and wood shingles; 1 ½ storeys; 1906(v); gable front with side hall; early 20th century eclectic; gable-roofed wall dormers; bracketed window hoods; shed-roofed verandah with offset gable over entry, on square pillars; Hopkins' Richmond Hill Creamery, 1906-13; Yellow Briar Cottage. Alterations and additions c1913 & 1974.

For more information see designating by-law 45-91





## 83 Arnold Crescent Ward 4

### James Hiltz House

Frame; aluminum siding; 1 ½ storeys; c1920(v); L-shaped; gable roof; James Hiltz, labourer. Frame 2 storey shed-roofed rear addition; altered.



## 89 Arnold Crescent Ward 4

### Thomas Douthwaite House WP

Frame; aluminum siding; 1 ½ storeys; c.1869 (v); Classic Ontario; transomed front windows; Albert Albin; renovated by Lavella Gould, 1904. Frame 1 storey rear addition.



## 93 Arnold Crescent Ward 4

### Frank Dolan House

Frame; aluminum siding; 1 ½ storeys; c1905(v); gable front with side hall; 1 storey gable roofed side wing; Frank Dolan; Sheppard family from 1921. Altered.





## 19 Aubrey Avenue **Ward 1**

Frame; drop clapboard; 1 storey;  
c1920; rectangular plan; gable roof;  
enclosed gable-roofed porch. Frame 1  
storey rear addition with multiple  
gables.



## 80 Baker Avenue

Ward 2

### Elvin J. Mitchell House

WP

Frame; red brick veneer & vinyl siding; 1 ½ storeys; 1922(v); gable front with side hall; side shed-roofed wall dormer; enclosed shed-roofed verandah on square posts on brick pedestals. Elvin J. Mitchell, guard. Peter Sander, builder.



## 84 Baker Avenue

Ward 2

### Albert Buchanan House

WP

Frame; red brick veneer & wood shingles; 1 ½ storeys; 1922(v); gable front with side hall; side shed-roofed wall dormer; shed-roofed verandah on square posts on brick pedestals; Albert D. Buchanan traveler; Peter Sander, builder.



## 104 Baker Avenue

Ward 2

### Reginald Petch House

WP

Brick; red; 1 ½ storeys; 1924(v); gable front with side hall; closed return eaves; side bay window; shed-roofed verandah on tapered square posts on brick pedestals. 2 storey side additions and 1 storey side addition. Reginald Petch, sales agent.





**108 Baker Avenue**      **Ward 2**  
**William H. Frisby House**      **WP**

Brick; red; 1 ½ storeys; 1926(v); side hall; Bungalow Cottage; gable roof with gable-roofed front dormer; side bay window; verandah under main roof, on tapered square posts on brick pedestals. 1 storey rear addition. William H. Frisby, Guard.



**8825 Bathurst Street**      **Ward 5**  
**Nicholas Cober House**

Frame; clapboard; 1 ½ storeys; c1855(v); T-shaped; Classical Revival; gable roof with return eaves; Classical doorcase; 1 ½ storey side extension with front canted bay window; hip-roofed side verandah; Nicholas Cober. Originally 3-bay front.



**12481 Bathurst Street**      **Ward 1**  
**Nelson Thomson House**

Frame; aluminum siding; 2 storeys; c1929; Foursquare; hip roof with hip-roofed front dormer; shed-roofed enclosed veranda. Brick; red 2 storeys; Her Majesty the Queen as Represented by the Minster. Formerly known as 12451 Bathurst Street





## 8763 Bayview Avenue Ward 6

### George Quantz House

Brick; patterned red/buff; 1 ½ storeys; c1890; T-shaped; Classic Ontario; transomed entry; canted side bay window; George Quantz. Originally patterned buff/red; re-faced in reverse colours but pattern maintained; bellcast verandah and barge-boards added.



## 10971 Bayview Avenue Ward 3

### Jacob Heise III House DES

Brick; patterned red/buff, Flemish bond on south side; 2 storeys with attic windows; c1855(v); 3-bay; Mennonite Georgian; gable roof; entry with sidelights; rectangular multi-paned transoms over doors on gable end; 1 storey side wing; Jacob Heise; Braeburn. Altered side & front porches. For more information see designating by-law 94-13



## 11061 Bayview Avenue Ward 3

### James Clifford House

Frame; aluminum siding; 1 ½ storeys; c1865; Classic Ontario; 6/6 windows; bargeboards; 1 ½ storey rear wing; James Clifford; Endean Nursery. Enclosed front porch, side verandah, and upper storey to rear wing added.



## 38 Bedford Park Avenue Ward 2

DES  
BP

### Crosby Hall

Frame; red brick-clad; 2 storeys; 1863(v); U-shaped, rear-facing; centre hall; Victorian Eclectic; gable roof; some round-headed windows; art glass in transomed windows; peaked and eared trim; octagonal domed cupola with round-headed windows and colonnettes; brick veneer and frame 1 storey rear wing on north side of U; Parker Crosby; renovated by son Isaac, c1889. Restored porch.

[For more information see designating by-law 222-78](#)





## 950 Bethesda Road Ward 1

### Robert Davies Houses

#### Building A

Brick and frame; lower storey brown brick, upper storey clapboard; 2 storeys; c1906(v); hip roof; Charles Langley, architect; Robert Davies; Davies Hall; Col Schuyler Snively, 1919. Built on foundation of Glen Lonely, home of Henri Quetton St George.

#### Building B

Frame; clapboard; 1 ½ storeys; c1920; gable roof with flared eaves; gable-roofed dormers; 3 Gothic-arched vents in gable. Originally ice house.

#### Building C

Frame; clapboard; 1 storey; 1860; gable roof with return eaves; 1 storey offset parallel wing.

### Structures of Potential Interest

Barn and small outbuilding





## 1229 Bethesda Road      Ward 1

### Shadowmere

Frame; stone; 2 storeys; c1935; long rectangular plan; large hip roof with deep overhangs; narrow flat headed windows and wider three panel windows; windows on the ground floor feature heavy stone lintels. Example of the Tudor Revival style.



## 1393 Bethesda Road      Ward 1

### Jacob Sheffer House

Frame; aluminum siding; 1 ½ storeys; c1840; gable roof with return eaves; Jacob Sheffer. Frame 1 storey rear addition; frame 1 storey garage side addition.



## 1714 Bethesda Road      Ward 1

### Teill-Baker House

Brick; red; 1 ½ storey bank house; c1845; 3-bay; Georgian; gable roof with return eaves; entry with sidelights; 12/8 windows; raised fieldstone basement with 6/6 windows framed with red brick; Simeon Teill or Michael Baker.



## 1836 Bethesda Road Ward 1

### Lloyd Public School

Brick; red; 1 storey; 1903(v); one-room school; gable front; 3 bays deep; tall rectangular windows; date-stone S S No 7 Whitchurch, erected 1903 AD; brick 1 storey rear wing; Lloyd Public School. Formerly known as 1800 Bethesda Road.



## 33 Betony Drive Ward 1 DES

### Jane Carscadden House BP

Frame; brick veneer, patterned red/buff, painted on front, stuccoed on sides and rear; 1 ½ storeys; c1875; T-shaped; Classic Ontario with Gothic window, bargeboards and kingpost in centre gable; transomed entry; segmental windows; frame 1 storey rear wing; Jane Carscadden. Burned April 1st, 2008. Relocated from 12933 Bathurst Street.

For more information see designating by-law 117-14



## 855 Bloomington Road Ward 2 WP

Timber frame; pressed metal siding with broken-faced ashlar pattern, similar pattern on larger quoins; 1 ½ storeys; c1851; 3-bay; gable roof with return eaves; irregular window openings; off-centre entry; Henry Pointon. Re-sashed. Formerly known as 1155 Bloomington Road





## 40 Bond Crescent

**Ward 1**

Brick; red (upper storey lighter in colour); 2 storeys; c1880; 3-bay; gable roof. Originally faced King Rd; shed-roofed side verandah; frame 1 storey rear addition.



## 528 Carrville Road

Ward 5

DES

### **Burr House**

BP

Plank-on-plank and brick; stucco and red brick, painted; 1 storey; c1824(v) and c1845(v); 3-bay; Ontario Cottage; hip roof; cooking fireplace and restored bakeoven; Rowland Burr, millwright; Thomas Boothby, blacksmith; site of blacksmith shop from 1830s to 20th century. Keffer small house added as summer kitchen/ woodshed, 1990.

For more information see designating by-law 222-78



## 530 Carrville Road

Ward 5

DES

### **Evangelical Church – Guild Hall**

BP

Vertical plank; clapboard; 1 storey; 1857(v); Classical Revival; gable front with return eaves; centre door; restored 9/6 windows; frame 1 storey rear wing; Canada Conference of Evangelical Associations in North America; converted to a house c1881. Relocated from 750 Carville Road in 1978.

For more information see designating by-law 222-78, amended by 104-88





### 33 Centre Street East Ward 2

#### Methodist Church Manse

DES  
BP

Brick; patterned red/buff; 1½ storeys. East wing: 1864(v); side hall; 3-bay; Georgian; gable roof; transomed entry with sidelights. Originally bellcast verandah with semi-elliptical arches. West wing: c1875; Flemish bond on west facade; gable roof; centre gable with drop finial; transomed entry. Trustees of the Methodist Church.

For more information see designating by-law 122-85



### 43 Centre Street East Ward 2

#### Lovica Stong House

WP

Brick; grey; 1 ½ storeys; c1920; Classic Ontario; truncated gable roof with centre gable; flat-roofed porch on tapered square posts; 1 storey shed-roofed rear wing. Built of recycled 19th century materials; porch enclosed. Lovica Stong, income property, 1922.



### 48 Centre Street East Ward 2

#### William Hord House

WP

Brick; red; 2 storeys; c1920; side hall; Queen Anne Revival; gable front with pent eave; transomed front window; side bay window; shed-roofed verandah on Tuscan columns on brick pedestals; William H. Graham, builder, to William Hord. Frame 2 storey shed roofed addition.



**52 Centre Street East      Ward 2**  
**Warren S. Ramer House      WP**

Brick; brown and red; 1 ½ storeys;  
 c1930; gable roof; shed roofed veranda  
 on thin columns.



~~**53 Centre Street East      Ward 2**~~  
~~**Ira D. Ramer House      WP**~~

~~Brick; red with grey brick rear wall; 2  
 storeys; 1913(v); side hall; Foursquare;  
 hip roof with flared eaves; gable-roofed  
 front dormer; transomed front window;  
 oval window; side bay window; Ira D  
 Ramer. Enclosed hip-roofed verandah on  
 Tuscan columns on brick pedestals;  
 frame 1 storey rear addition. William  
 Graham, builder.~~



**58 Centre Street East      Ward 2**  
**George Glenn House**

Brick; brown; 2 storeys; 1921(v); side  
 hall; Queen Anne Revival; gable front  
 with pent eave; transomed front  
 window; shed-roofed verandah on  
 Tuscan columns on brick pedestals;  
 William H. Graham, builder, to George  
 Glenn; Frame 2 storey rear addition.





**59 Centre Street East    Ward 2**  
**Joseph H. Hall House**

Brick; red; 1 ½ storeys; 1913(v); L-shaped; side hall; Queen Anne Revival; gable front with pent eaves and diamond patterned wood shingled gable; hip-roofed verandah on paired slender posts on brick pedestals, with decorative railing; built by William H. Graham for Joseph H Hall. Frame 1 storey rear addition.



**66 Centre Street East    Ward 2**  
**William Guest House**

Brick; red with stone faced front wall; 1 ½ storeys; c1923(v); gable roof with pent eaves; gable hip veranda on thin columns.



**72 Centre Street East    Ward 2**  
**William R. Robinson House    WP**

Brick; grey with red mortar; 1 ½ storeys; 1920(v); side hall; gable front with pent eave; gable-roofed porch on altered posts on brick pedestals; Frame 1 ½ storey rear addition. William H. Graham, builder to William R. Robinson.





## 75 Centre Street East      Ward 2

### **John B. Hickson House**

Frame; clapboard; 1 ½ storeys; c1910(v); gable front with side hall; shed-roofed side dormer; transomed front window; shedroofed verandah on Tuscan columns on panelled wooden pedestals; built by William H. Graham and Chas Hickson for John Hickson. Enclosed side porch; 2 storey rear addition.



## 76 Centre Street East      Ward 2

### **Clarence Love House**

Brick; red; 1 ½ storeys; gable roof; gable hip-roofed veranda on thin columns. 1 ½ storey rear addition. William H. Graham, builder to Clarence Hope.



## 81 Centre Street East      Ward 2

### **John Hickson House**      WP

Brick; red; 2 storeys; 1913(v); side hall; hip roof with hip-roofed front and rear dormers; front bay window; oval window; curved roofed porch on square chamfered posts; built by Chas Hickson for John Hickson; John Sheardown, 1915. Frame 1 storey rear addition.





## 82 Centre Street East Ward 2

### George Gee House

Brick; red; 2 storeys; c1919(v); side hall; gable front with pent eave; gable-roofed side dormer; transomed front window; shed roofed verandah on square posts on brick pedestals; built by William H. Graham for William H. Robinson. 1 storey rear addition.



## 85 Centre Street East Ward 2

### John Gilroy House

Frame; aluminum siding; 1 ½ storeys; 1880 ; gable roof; John Gilroy. Originally 3-bay; large 2 storey apartment. Addition to rear.



## 89 Centre Street East Ward 2

### James Ellis House

Frame; aluminum siding; 1 ½ storeys; c1911(v); gable front with side hall; Chas Hickson, builder, to James Ellis; Major additions; re-sashed.



## 90 Centre Street East Ward 2

WP  
BP

### William Graham House

Frame; clapboard; 2 storeys; c1911(v); side hall; hip roof with hip-roofed front and rear dormers; transomed front window; shed roofed verandah with dentils, on Tuscan columns on brick pedestals; William H. Graham, for his own use. 1 ½ storey rear addition.



## 97 Centre Street East Ward 2

BP

### Harold J. Mills House

Frame; aluminum siding; 2 storeys; c1921; gable roof with pent eaves; veranda on decorative columns.



## 11 Centre Street West Ward 4

WP

### Temperance Hall

Frame; clapboard; 1 ½ storeys; 1876(v); gable front with side hall; ogee-headed 2/2 windows on ground floor; scalloped frieze; hip-roofed porch on square posts; Temperance Hall; Independent Order of Good Templars. Brick veneer and clapboard 2 storey rear addition.





## 15 Centre Street West Ward 4

### Louis Doner House

Brick; brown; 1 ½ storeys; c1920; side hall; Bungalow Cottage; gable roof with shed-roofed front dormer; entry with sidelights; hip-roofed verandah on grouped slender square posts, on fieldstone pedestals, with fieldstone railings; Louis Doner.



## 16 Centre Street West Ward 4

### Thomas Munshaw House

Frame; stucco; 1 ½ storeys; c1872(v); gable front with side hall; shed-roofed side dormer; window trim with pediment-shaped heads; enclosed hip-roofed verandah; 1 storey rear wing; Thomas Munshaw. Originally 3-bay, centre hall plan, facing Yonge street; renovated c1925; K. Blanchard.



## 25 Centre Street West Ward 4

### Isabella Lafferty House

Frame; aluminum siding; 1 ½ storeys; c1876(v); Classic Ontario with Gothic window in centre gable, partially obscured by siding; frame 1 storey rear wing; Isabella Lafferty. Originally stucco.



## 29 Centre Street West Ward 4

DES  
BP

### John Velie Senior House

Brick; patterned red/buff; 1 ½ storeys; c1864(v); 3-bay; Georgian; gable roof with return eaves; entry with sidelights, (replaced 1983); 6/6 windows; multi-coloured soft brick, coated red on east and south facades only; false pointing on south facade; bellcast verandah on slender chamfered posts with semi-elliptical arches; John Velie Sr. Frame 1 storey shed-roofed rear addition.

For more information see designating by-law 199-84



## 37/39 Centre Street West Ward 4

### William Proctor Double House

Brick; dark red; 2 storeys with attic windows; 1891(v); double house; Queen Anne Revival; 2 storey square bays on front; segmental and ½ - round window heads; art glass door and window transoms; art glass sidelights in front windows; panelled bargeboards; decorative brickwork, including raised belt courses and basket-weave panels; brick 2 storey gambrel-roofed rear wing with attic windows; No.37 has original rear porch; built by John L. Innes for William Proctor.





**55 Centre Street West Ward 3**  
**Reginald Copper House WP**

Brick; grey with red mortar; 2 storeys; c1921(v); side hall; Foursquare; pyramid roof; transomed front window; hip-roofed verandah on tapered square posts on brick pedestals; small 1 storey shed-roofed rear wing; Reginald Cooper; book-keeper.



**58 Centre Street West Ward 4**  
**Alice Endean House WP**

Brick; brown; 2 storeys; 1923(v); side hall; Queen Anne Revival; gable front with pent eave; transomed front window; shed-roofed verandah on Tuscan columns on brick pedestals; William H. Graham, builder, to George Glenn; Frame 2 storey rear addition.



**59 Centre Street West Ward 4**  
**Nathaniel Wellman House**

Frame; clapboard and wood shingles; 2 storeys with attic window; c1914(v); gable front with side hall; gambrel roof with shed-roofed side dormers; transomed window; hip-roofed verandah on Tuscan columns; Nathaniel Wellwood, Methodist minister. Enclosed side porch; 1 storey rear addition.





**62 Centre Street West**      **Ward 4**  
**William Atkinson House**      **WP**

Vertical plank and frame; stucco; 1½ storeys; c1858 and c1879; 3-bay; Classic Ontario; 6/6 windows; upper windows with pediment shaped heads; side bay window; hip-roofed verandah on turned posts with decorative brackets (restored); fluted pilasters; 1 ½ storey rear wing; Entry originally single and off-centre; roof raised; centre gable added; major 1 ½ storey rear addition.



**63 Centre Street West**      **Ward 4**  
**Ralph Atkinson House**      **WP**

Frame; stucco; 1 ½ storeys; c1938(v); side hall; gable roof with pedimented side gables; large gable-roofed front dormer; shedroofed rear dormer; gable-roofed porch on short tapered square posts on brick pedestals; small 2 storey rear wing; Ralph W. Atkinson, builder, for own use.



**65 Centre Street West**      **Ward 4**  
**Margaret C. Warwood House**      **WP**

Frame; aluminum siding; 1 ½ storeys; 1913(v); gable front; gable roofed side dormer; series of 6 Queen Anne sash upper windows; art glass side windows; Margaret C. Warwood. Originally open verandah under overhang of upper storey; 1 storey shed-roofed addition.





**71 Centre Street West**      **Ward 4**  
**James A. Hunt House**      **WP**

Brick; red; 1 ½ storeys; 1923(v); side hall; Queen Anne Revival; gable front with pent eave and shingled gable; return eaves; hip roofed verandah on Tuscan columns on brick pedestals; James A Hunt. 1 ½ storey rear addition.



**75 Centre Street West**      **Ward 4**  
**Magdalene Klinck House**      **WP**

Brick; red; 2 storeys with attic window; 1914(v); gable front with side hall; gambrel roof with pent eave and diamond-patterned shingled gable above, butt-patterned below; gable and shed-roofed side dormers; transomed front window; hip-roofed verandah on Tuscan columns on brick pedestals; William H. Graham, builder, to Magdalene Klinck. Rear additions.



**79 Centre Street West**      **Ward 4**  
**Winifred Mortson House**      **WP**

Brick; red, painted; 2 storeys with attic window; 1914(v); gable front with side hall; gambrel roof with pent eaves and diamond-patterned wood shingled gable; shed-roofed side dormer; shed-roofed verandah on Tuscan columns on brick pedestals; John A. Graham, builder, to Winifrid Mortson.





## 91 Centre Street West Ward 4

### Jane Ness House

Brick; red; 2 storeys; c1917(v); truncated gable roof; Jane Ness, widow. 2 storey enclosed porch; 1 storey rear addition; altered.



## 97 Centre Street West Ward 4

DES  
BP

### Springbrook: Russell House

Brick; patterned red/buff; 2 storeys; c1868; 3-bay; Georgian; gable roof with return eaves; transomed entry with sidelights; segmental openings; ¼ - round attic windows; raised quoins; decorative brick banding; patterned brick 2 storey rear wing; brick 1 storey rear wing; frame 1 storey rear wing; William Russell, Springbrook Farm; Langstaff Jail Farm, 1911. Verandah added. Relocated from Langstaff Jail Farm 1995.

[For more information see designating by-law 60-96](#)



## 101 Centre Street West Ward 4

### Harold Murphy House WP

Brick; brown and beige; 1 ½ storeys; 1922(v); side hall; Arts and Crafts; bracketed gable roof with large bracketed gable-roofed front dormer; exposed rafter ends; side bay window; verandah under main roof, on short square tapered posts on brick pedestals; Harold Murphy.





**111 Centre Street West Ward 4**  
**Harriet Hewison House**

Brick; red; 1 ½ storeys; c1924(v); side hall; gable roof with pent eaves; large gable-roofed front dormer; art glass in side window; verandah on short square tapered posts on high brick pedestals; possibly Harriet Hewison. 2 storey rear addition.



**127 Centre Street West Ward 4**  
**Innes and Co. Rental House WP**

Frame; vinyl siding; 1 ½ storeys; c1914; gable roof; shed-roofed front dormer; flat-roofed porch on metal posts; Leslie Innes and Sons.



**129 Centre Street West Ward 4**  
**Innes and Co. Rental House WP**

Frame; aluminum siding; 1 ½ storeys; c1914; gable roof; gable roofed front dormer; Leslie Innes and Sons.



**130 Centre Street West Ward 4**  
**Edward Cunningham House WP**

Frame; stucco; 1 ½ storeys; gable roof; gable-roofed front dormer; Edward Cunningham.



**143 Centre Street West Ward 4**  
**Martin-Furey House WP**

Frame; clapboard; 1 ½ storeys; c1920; gable front with side hall; shed-roofed side dormers; shed-roofed verandah on square tapered posts; 1 storey rear wing.



**37 Chao Crescent Ward 1**  
**James Carscadden House DES BP**

Brick; red, stuccoed; 1 ½ storeys; c1845; 3-bay; Georgian; gable roof with return eaves; 6/6 windows; Classical doorcase with 6-panel door; transom with diamond motif in glazing; James Carscadden; James W. Legge, 1893; fire damage, 2008. Relocated from 685 King Road in 2014.

[For more information see designating by-law 118-14](#)





## 9 Church Street North Ward 2

### C.H. Sanderson House WP

Brick; buff; 2 storeys; c1938; centre hall; 3-bay; vernacular interpretation of Early International with Georgian Revival detailing; Classical doorcase; flat roof; 6/6 windows; tall, narrow window over entry; side garage; Chas Sanderson; C.H. Sanderson, builder.



## 19 Church Street North Ward 2

### Amos Wright House DES BP

Frame; clapboard; 1 storey; c1840; centre hall; 5-bay; Ontario Cottage; hip roof; entry with sidelights and Classical doorcase; Amos Wright, MPP & MP, Dominion Auditor. Gable-roofed 20th century porch; 1 storey rear addition.

[For more information see designating by-law 123-85](#)



## 20 Church Street North Ward 2

### Albert Hill House

Frame; red brick veneer; 1 ½ storeys; c1927(v); side hall; Arts and Crafts; gable roof with flared eaves; shed-roofed front and rear wall dormers; exposed rafter ends; casement windows; front bay window with shed roof; entry with sidelights with leaded glass; art glass; roof extends to cover porch, supported on square posts; Albert Hill.





## 26 Church Street North Ward 2

### William Cook House WP

Frame; red brick veneer; 2 ½ storeys; 1913(v); side hall; Queen Anne Revival; gable front with pent eave and wood-shingled gable; hip-roofed dormer; front bay window; entry with sidelights with leaded glass; gable-roofed porch with lattice work; hip-roofed side wing; small brick rear wing with balcony; built by L. Innes and Sons for William Cook. Frame 1 storey rear addition.



## 27 Church Street North Ward 2

### Dr. Rolph Langstaff House

Frame; cedar siding; 2 storeys; c1938(v); gable roof; gable-roofed front dormers. 2 storey rear addition.



## 38 Church Street North Ward 2

### John Duncan House WP

Brick; red; 1 ½ storeys; 1914(v); L-shaped; truncated gable roof; side bay window; decorative brick soldier courses; porch under main roof, on brick arches; Chas Wiley. 1 storey rear addition.





### 39 Church Street North Ward 2

#### **Dr. James Langstaff Rental House** WP

Frame; aluminum siding; 1 ½ storeys; c1880(v); 3-bay; Georgian; gable roof; 1 ½ storey rear wing; built by John Gilroy for James Langstaff.



### 40 Church Street North Ward 2

#### **James H. Ramsden House**

Brick; dark red; 1 ½ storeys; c1914(v); side hall; gable front; side gable; exposed rafter ends; side bay window; shed-roofed verandah on altered posts on brick pedestals; F. M. Brown; James W. Ramsden, labourer 1915. Frame 1 storey rear addition.



### 3 Church Street South Ward 2

#### **William Ambler House** WP

Frame; aluminum siding; 1 ¾ storeys; c1870(v); T-shaped, with front wing c1890; gable roof with pent eave and scallop-patterned shingled gables; shed-roofed porch on Tuscan columns on panelled wooden pedestals; 1 ¾ storey and 1 storey rear wings; William Ambler, hotel proprietor. Originally clapboard; renovated c1915.



## 4 Church Street South

Ward 2

### **Dr. John P. Wilson House**

Brick; red; 2 storeys; 1921(v); Foursquare; hip roof with hip-roofed front and side dormers with battered sides; enclosed porch with gable roof with pent eave and dentils, on brick columns; Dr John P. Wilson.



## 12/14 Church Street South

Ward 2

### **Charles Manson Double House**

Brick; coated dark red; 2 storeys; 1891(V); double house; gable roof; segmental windows; paired ¼ - segmental windows in gables; art glass in transoms; doors to balcony; 2 storey rear wing; built by John L. Innes for Charles Mason. Rear additions; porch added 1984.



## 13 Church Street South

Ward 2

### **William Graham House**

Brick; dark red and brown; 2 storeys; 1917(v); Queen Anne Revival; hip roof with shingled front gable; curved wrap-around verandah with dentils, on square tapered posts on brick pedestals; gable-roofed side and rear wings; William H. Graham, builder, for his own use. Rear additions; carriage shed.





## 25 Church Street South Ward 2

### **Ambler Rental House**

Frame; insul-bric; 1 ½ storeys; c1880; 3-bay; T-shaped; gable roof; enclosed gable-roofed porch with pent eave; 1 storey rear wing.



## 26 Church Street South Ward 2

**DES  
BP**

### **Robert Hewison House**

Frame; aluminum siding; 1 ½ storeys; c1840; L-shaped; 3-bay; gable roof; 8-panelled doors; attached woodshed with horse stall; 1 ½ storeys rear wing with hip-roofed verandah on square chamfered posts, in ell; Robert Hewison, shoemaker. Originally stucco.

[For more information see designating by-law 26-11](#)



## 28 Church Street South Ward 2

### **T.H. Trench Rental House** **WP**

Brick; painted; 1 ½ storeys; c1914(v); side hall; Queen Anne Revival; gable front with pent eave and diamond-patterned shingled gable; shed-roofed verandah on Tuscan columns on brick pedestals. T. H. Trench, for rental. Rear addition.



### 30 Church Street South Ward 2

#### **T.H. Trench Rental House**

Brick; painted; 1 ½ storeys; c1915(v); side hall; Queen Anne Revival; gable front with pent eave and shingled gable; front window with multi-paned transom; gable-roofed porch with pent eave, on square tapered posts on brick pedestals; T. H. Trench, for rental. Rear addition.



### 40 Church Street South Ward 2

#### **T.H. Rental House**

Brick; red, with grey brick rear wall; 1 ½ storeys; c1916(v); side hall; Queen Anne Revival; gable front with pent eave; transomed front window; side bay window; gable-roofed porch with pent eave, on square tapered posts on brick pedestals. Rear addition.



### 81 Church Street South Ward 2

#### **William S. Warren House** WP

Plank-on-plank and frame; stucco, tooled to resemble white brick; 1 ½ storeys; c1843; 3-bay; gable roof; Elizabeth Warren; John Palmer Jr., 1878. Originally 1 storey; enclosed shed-roofed verandah; 2 storey rear wing.





**85 Church Street South Ward 2**  
**James Dixon House WP**

Brick; red; 2 storeys; c1924(v); side hall; Foursquare; hip roof with hip-roofed front dormer with battered sides; entry with sidelights; transomed front window; art glass side windows; shed-roofed verandah on Tuscan columns on brick pedestals; William H. Graham, builder, to James Dixon; William A. Wright, 1926.



**91 Church Street South Ward 2**  
**William C. Savage House WP**

Brick; red; 2 storeys; c1921(v); side hall; Foursquare; hip roof with hip-roofed front dormer with battered sides; entry with sidelights; art glass; shed-roofed verandah with cross gable over entry, on Tuscan columns on brick pedestals; built by William H. Graham for W. C. Savage, Marchant.



**95 Church Street South Ward 2**  
**William Duncan House WP**

Brick; red; 2 storeys; 1916(v); Foursquare; hip roof with gable roofed front dormer with pent eave; Charles Hickson, builder, to William Duncan, traveller. Verandah removed; garage added; altered.



**96 Church Street South Ward 2**  
**Jacob Lunau House WP**

Brick; grey with red mortar; 2 storeys; 1914(v); side hall; hip roof with shed-roofed front dormer; leaded glass transom in front window; gable-roofed porch on square posts on battered riverstone piers; Jacob Lunau. Large rear addition.



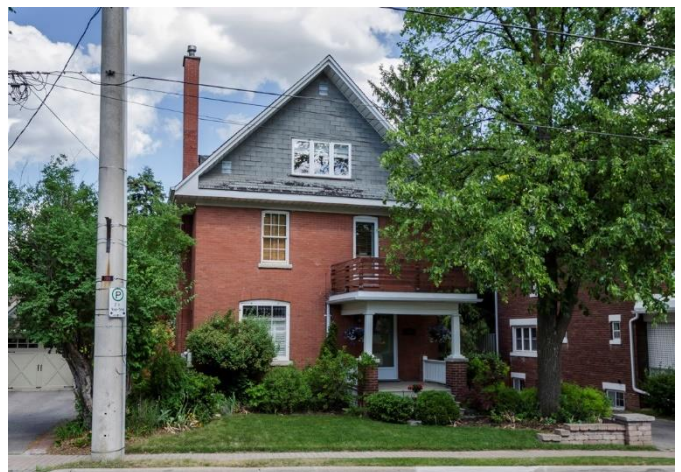
**99 Church Street South Ward 2**  
**William T. Graham House WP**

Brick; red; 2 storeys; 1915(v); side hall; Queen Anne Revival; gable front with pent eave and shingled gable; bevelled glass in front door; art glass in side window; hip-roofed verandah on tapered square posts on brick pedestals; James Hislop to William T. Graham. Rear addition.



**103 Church Street South Ward 2**  
**Charles Hickson House WP**

Brick; red; 2 ½ storeys; 1915(v); side hall; Queen Anne Revival; gable front with pent eave; leaded glass transom in front windows; art glass; oriel side window; flat-roofed porch with balcony, on square posts on brick pedestals; Charles Hickson. Rear sunroom added.





## 107 Church Street South **Ward 2**

### **R.F. Hicks House** **WP**

Brick; red; 2 storeys; 1915(v); side hall; Queen Anne Revival; gable front with wood-shingled gable; gable window set in recess with inward-curving sidewalls; flat-roofed verandah with Tuscan columns on brick pedestals; Lewis A Marquis.



## 110 Church Street South **Ward 2**

### **McKee-Perkins House** **WP**

B Brick; grey with red mortar; 2 storeys; 1915(v); side hall; hip roof with shed-roofed front and rear dormers; leaded glass transom in front window; gable-roofed porch with decorative half-timbering, on Tuscan columns on brick pedestals; Robert McKee. Rear sunroom added. Late addition front facade, 1999.



## 115 Church Street South **Ward 2**

### **Neil McKenzie House**

Brick; red; 2 storeys; 1913(v); side hall; Queen Anne Revival; gable front with pent eave and wood-shingled gable; gable-roofed side dormer with pent eave; 2 storey bay window, wood-shingled between storeys; gable-roofed porch on square tapered posts on battered brick pedestals; hip-roofed rear verandah on square posts on brick pedestals; David J. Bell to Neil McKenzie.



## 156 Church Street South Ward 5

### Palmer Family House

Frame; narrow clapboard; 2 storeys; c1900; gable front with side hall; diamond-shaped side window. Bay window and bellcast verandah on turned wooden posts, added; rear addition.

## 376 Church Street South Ward 6

DES

### Richard Vanderburgh House BP

Transitional frame; clapboard (restored); 2 storeys; c1833; 5-bay; Loyalist Georgian; gable roof with return eaves; 12/12 windows (restored); 6-panel door with Classical doorcase; elliptical panel in west gable (restored); Elizabeth and Richard Vanderburgh. Rear wing: frame; 1 storey; shed-roofed, creating saltbox form; c1840; Phoebe and Richard Vanderburgh. Relocated from 32 Hillview Drive, 1987.

[For more information see designating by-law 392-88](#)

## 28 Colston Court Ward 6

### Matthew Lymburner House

Frame; clapboard; 1 ½ storeys; c1840; 5-bay; Georgian; gable roof with return eaves; 6-panel door. Re-sashed; moved from Yonge Street, 41-1-V, c1965. Relocated from 28 Duncan Road.





## 115 Crosby Avenue Ward 2

### **Matthew Lymburner House**

Frame; insul-bric and aluminum siding;  
2 storeys; c1860; 3-bay; gable roof  
with return eaves; off-centre entry.  
Rear addition; Relocated from Yonge  
street, 1952.



~~24 Dunlop Street~~ — ~~Ward 2~~

~~Lloyd Hill House~~

~~Brick; red; 1 ½ storeys; c1920; Lloyd Hill House~~





~~41 Elgin Mills Road East. Ward 2~~  
~~William Neal House~~

~~Brick; red; 2 storeys; possibly 19th century; 3-bay; T-shaped; steep hip roof; gable-roofed front dormer; enclosed hip-roofed verandah; 2-storey gable-roofed rear wing with return eaves. Frame 1 ½ storey rear addition.~~



1000 Elgin Mills Road East

Ward 3

DES

**A: David-Eyer Jr. House**

BP

Timber frame; clapboard; 1 ½ storeys; c1840; 3-bay; Georgian; gable roof with return eaves; Classical doorcase with blind sidelights; offset 1 and ½ storey rear wing; Christian Steckley Jr.; David Eyer Jr., c1850; Dr. Clark Noble, noted antiquary, c1950. Frame. 1 storey side addition. Silo and outbuilding on property

For more information see designating by-law 290-98



**B: David-Eyer Jr. Stone Creamery** BP

Stone; frame; 1 storey; rear addition; gross doddie house; Cold House; originally described as an outbuilding before being converted into a dwelling.

For more information see designating by-law 290-98



## 1045 Elgin Mills Road East

Ward 3

DES

### David Eyer Sr. Homestead House BP

Frame; pressed metal siding & stucco; 2 storeys with attic windows; 1828(v); 3-bay; Mennonite Georgian; gable roof with return eaves; entry with wide 6-panel door & side lights; partially enclosed 2 storey rear verandah under main roof; John Eyer; David Eyer Sr. 20th C front verandah; Redstone Farm.

For more information see designating by-law 17-94

## 1370 Elgin Mills Road East

Ward 3

DES

### Richmond Hill Railway Station BP

Frame; insul-bric; 1 storey; 1906(v); hip roof with end gables; gable over canted bay window; transomed entry; Queen Anne sash; R.H. Railway Station, Canadian Northern Ontario Railway, CNR. Relocated from Station Road in 1979. Formerly 1378 Elgin Mills Road East.

For more information see designating by-law 17-93

## 1380 Elgin Mills Road East

Ward 3

DES

### Thomas F. Boynton House BP

Brick; patterned red/buff; 1 ½ storeys; c1874(v); T-shaped; Classic Ontario with Gothic window and bargeboards in centre gable; transomed entry with fluted ¼ columns; 1 storey brick rear wing; bellcast side verandah on turned posts; Thomas Boynton. 20th century verandah.

For more information see designating by-law 16-93





## 1591 Elgin Mills Road East

Ward 3

### **Peter Heise House & Elgin Mills Cemetery**

Fieldstone with buff brick quoins, frieze, and door and window surrounds; squared stone front; 1 ½ storeys; c1851(v); 4-bay; Georgian; double-fronted; gable roof with return eaves; off-centre entries with 6-panel doors and sidelights; rear verandah on unusual tapered octagon posts; Peter Heise; Joseph Gee, 1877. 20th century front porch; 1 storey frame addition. Elgin Mills Cemetery on property; 1979. Formerly 1723 Elgin Mills Road East.



(Google Maps, 2018)



## 94 Elgin Mills Road West Ward 4

### **Workers Cottage for Newton Tannery House**

Frame; clapboard; 1 storey; c1850 (rear) and c1870 (front); 3-bay; gable roof; 6/6 and 12/8 windows; worker's cottage for Newton Tannery. Formerly known as 36 Elgin Mills Road East.



## 711 Elgin Mills Road West Ward 4

### **Solomon Oster House**

Frame; asbestos shingles; 1 ½ storeys; c1905; L-shaped; gable roof; partially enclosed gable-roofed verandah; Solomon Oster. 2 storey rear addition. Formerly known as 269 Elgin Mills Road.

## 4 Elizabeth Street North Ward 4

DES

### Hove To: Wilson – Mowatt House BP

Frame; stucco and drop clapboard; 1½ storeys; c1876(v); gable front with side hall; bracketed eaves; transomed entry with sidelights; bellcast verandah with decorative brackets on chamfered posts; 1 storey stucco rear wing; Asa B. Wilson, fanning mill manufacturer; Farley Mowat, author, 1940s; Hove-To.

For more information see designating by-law 198-84



## 10 Elizabeth Street North Ward 4

DES

### Phillips-Newbury-Bowman House BP

Timber frame; asbestos shingles; 1 ½ storeys; c1825(v); 5-bay; gable roof with gable-roofed wall dormers; entry with sidelights; 1 ½ storeys rear wing; Peter Phillips; Martha Harrison, 1842; John Newbery and family, 1853-1916. Renovated to Tudor style, c1918; J. M. Bowman, Don Valley Brick Co. Relocated from 11135 Yonge, 1991.

For more information see designating by-law 238-92





## 16 Elizabeth Street North Ward 4

### Burton F. Caldwell House WP

Brick; grey cement; 2 storeys; 1912(v); L-shaped; side hall; hip roof; transomed front window; moulded cement block quoins; gable-roofed porch with pent eave and fish scale-patterned wood shingled gable, on Tuscan columns on brick pedestals; William Gould to Burton F. Caldwell; first residence built of Lake Wilcox cement brick.



## 17 Elizabeth Street North Ward 4

### William Harrison Speculative House BP

Frame; brick veneer, patterned buff/red; 1 ½ storeys; 1885(v); L-shaped; Picturesque; gable roof; canted & rectangular bay windows; finials and bargeboards; bellcast verandah; William Harrison, to Sam Brown, auctioneer, 1902; 1 of 3 houses at Harrison's Corner. 2nd storey addition to original 1 storey board and batten rear wing.



## 24 Elizabeth Street North Ward 4

### Klinck-Redditt House

Frame; buff brick veneer; 2 storeys; 1923(v); side hall; Queen Anne Revival; gable front with pent eave and shingled gable; side bay windows; shed-roofed verandah on brick piers; Robert Endean to B. Caldwell; J. A. Ferguson, 1927. Rear addition.





**16 Elizabeth Street South** Ward 4  
**Woodruffe Milbourne House** WP

Frame; red brick veneer; 1 ½ storeys; c1905(v); L-shaped; gable roof; shed-roofed side dormer; hip-roofed verandah on tapered square posts on brick pedestals; Woodruffe Milbourne.



**20 Elizabeth Street South** Ward 4  
**Robert Endean House** WP

Frame; buff brick veneer; 1 ½ storeys: 1922(v); side hall; Arts and Crafts bungalow; gable roof with bracketed eaves and exposed rafter ends; gable-roofed front dormer; side bay window; art glass; verandah under main roof, with peaked-arch entablature, on battered brick piers; Robert Endean, nurseryman.



**24 Elizabeth Street South** Ward 4  
**Burton F. Caldwell House**

Frame; buff brick veneer; 2 storeys; 1923(v); side hall; Queen Anne Revival; gable front with pent eave and shingled gable; side bay windows; shed-roofed verandah on brick piers; Robert Endean to B. Caldwell; J. A. Ferguson, 1927. Rear addition.





## 28/30 Elizabeth Street South

Ward 4

WP

### **Abraham Law Tannery**

Timber frame/vertical plank; aluminum siding; 2 storeys; c1840; double house; gable roof; small, blind centre gable; shed-roofed verandah on slender square posts; 2 storey rear wing; possibly Abraham Law's tannery; originally clapboard. Relocated from Richmond Street.



### 3 Farmer Court

Ward 3

#### **Walter and Faith Newns House** DES

Asphalt shingles; 1 ½ storeys; 1936; Vernacular mansard; mixed, modern windows; much renovated; 2nd storey contained in large mansard roof, projected to front and supported by slim steel posts; 1 storey shallow mansard containing pair of garages.

For more information see designating by-law 150-09 (Gormley HCD)



### 5 Farmer Court

Ward 3

#### **Paul & Doreen (Reaman) Farmer House** DES

Brick; 1 storey; 1955; Classic ranch house, with front-gable on the left; large chimney in right hand wall, with recessed two door garage to the right; two outbuildings on property.

For more information see designating by-law 150-09 (Gormley HCD)



### 7 Farmer Court

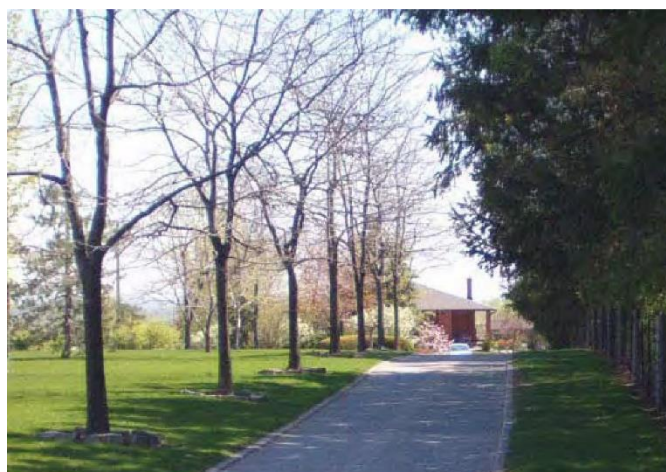
Ward 3

DES

#### **Peter and Arnold Stehouwer House**

Frame; brick; 2 storeys; 1995; Modern foursquare style; simple two-bay hipped roof box; two outbuildings on property.

For more information see designating by-law 150-09 (Gormley HCD)





### 32 Frank Endean Road **Ward 3** **Jacob Eyer House**

Frame; clapboard; 1 ½ storeys; c1835; gable front with side hall; Classical Revival; 6/6 & 2/2 windows; some window surrounds with pediment-shaped heads; remnant of bellcast verandah on slender octagonal posts; 1 ½ storey side wing with 1 storey shed roofed addition in ell; James Marsh. Originally had stone outdoor bake-oven. Relocated from 10381 Bayview Ave.



### 36 Frank Endean Road **Ward 3** **Monkman House**

Brick; multicoloured; 1 ½ storeys; Classic Ontario with gothic window; hip-roofed veranda on decorative circular pillars; 2/2 windows; fire demolished house; reconstructed; Relocated from 1420 Major Mackenzie Drive East



### 40 Frank Endean Road **Ward 3** **DES**

**Willow Grove: Horner-Elliot House WP**  
Frame; wood siding; 1½ storeys; c.1840; L-shaped design; gable roof veranda on decorative columns; Relocated from 1000 Major Mackenzie Drive East.

For more information see designating by-law 2-98



## 1 Gormley Court

Ward 3

### Alfred Brillinger House

DES

Frame; red brick veneer; 2 ½ storeys; 1921(v); side hall; Queen Anne Revival; gable front with pent eave; hip-roofed dormer; 2 storey bay window; enclosed gable-roofed verandah; Alfred Brillinger, farmer. Large rear addition.

For more information see designating by-law 150-09 (Gormley HCD)



## 2 Gormley Court

Ward 3

### Levi B. Schell

DES

Frame; brick; 1 storey; 1990; Large ranch house with asymmetrical and angled plan; mixture of shallow gable and shed roofs; precast retaining walls; mixed windows.

For more information see designating by-law 150-09 (Gormley HCD)



## 21 Gormley Court

Ward 3

### John and Sarah Vogelzang House

DES

Frame; brick; 1 storey; 1998; Long horizontal massing under long low sloped roof; garage projects left, with doors facing inward right; wide, shallow, hipped-roof entrance portico, supported on two columns; casement windows.

For more information see designating by-law 150-09 (Gormley HCD)





## 26 Gormley Court

Ward 3

### John Farmer House

DES

Frame; red brick veneer; 2 storeys; 1919(v); side hall; Foursquare; hip roof with hip-roofed front dormer; side bay window; enclosed hip-roofed verandah; Joseph Farmer, farmer. Side addition. Gambrel-roofed barn with flared eaves.

For more information see designating by-law 150-09 (Gormley HCD)



## 27 Gormley Court

Ward 3

### Allan and Lavinia May (Fennel)

#### Pope House

DES

Frame; brick; 1 storey; 1959; Classic early ranch house; wide shallow front facing gable; projecting double-width garage with shallow front gable. Allan Pope, built by George Barrett.

For more information see designating by-law 150-09 (Gormley HCD)



## 31 Gormley Court

Ward 3

### Clarence Heise House

DES

WP

Frame; brick veneer; 1 ½ storeys; c1926(v); Queen Anne Revival; gable front with pent eave and return eaves; Clarence Heise, apiarist. Re-bricked and altered, 1990.

For more information see designating by-law 150-09 (Gormley HCD)



## 32 Gormley Court

Ward 3

DES

WP

### **Samuel Baker Jr. House**

Frame; aluminum siding; 1 ½ storeys; c1858(V); Mennonite double house; gable roof with return eaves; shed-roofed dormers; transomed entry; bellcast verandah on turned posts; Samuel Baker Jr., farmer. Originally had doddy house, with 2nd front door; side addition; relocated on same property in 1978 for road bypass.

For more information see designating by-law 150-09 (Gormley HCD)



## 8 Gormley Road East

Ward 3

### **Anthony and Donna Marsiglio House**

DES

Frame; brick; 1.5; 1986; Ontario farmhouse; 3 bays, double entrance doors, large round-head window in central gable with fan light at top; garage is lower side gable, slightly recessed; side gable roof, with central front gable; asphalt shingles; double hung 1/1 windows.

For more information see designating by-law 150-09 (Gormley HCD)





## 9 Gormley Road East Ward 3

### Keith and Mildred Hood House DES

Frame; brick; 1 storey; 1988; 5-bay ranch house with elaborated and recessed entrance bay; garage slightly lower and recessed, doors on left wall; outbuilding; hipped roof with side gable at joint with garage; asphalt shingles; windows, casements w/decorative mullion bars.

For more information see designating by-law 150-09 (Gormley HCD)



## 21 Gormley Road East Ward 3

### John Sider House DES

Frame; red brick veneer; 2 storeys; 1921(v); Foursquare; hip roof with widow's walk and hip-roofed front dormer; transomed windows; side bay window; shed-roofed verandah with pediment over entry, tapered octagonal posts on brick pedestals; John Sider, labourer. Carriage shed on property.

For more information see designating by-law 150-09 (Gormley HCD)



## 22 Gormley Road East Ward 3

### James Hunt House DES

Frame; red brick veneer; 2 storeys; 1917(v); L-shaped; hip roof with pedimented gable on wing; hip-roofed front dormer; transomed windows; amber glass; James Hunt, thresher. Hip-roofed verandah added; rear and side additions.

For more information see designating by-law 150-09 (Gormley HCD)



**24 Gormley Road East** Ward 3  
**Stanley E. and Mabel (Flintoff) Eade House** DES

Frame; vinyl clapboard; 1½ storeys; 1958; Front-gabled cottage; full-width shed-roof verandah with central gable; entrance door and verandah posts offset to left; decorative louvres applied to gable end; Built by Stanley E. Hunt, section foreman.

For more information see designating by-law 150-09 (Gormley HCD)

**25 Gormley Road East** Ward 3  
**John & Pearl (Hunt) Sider House** DES

Frame; brick; 1 storey; 1949; Vernacular bungalow; L-plan with angled entrance in ell; decorative precast at foundation, sills and in quoining around entrance; hipped roof with front gable wing; segmental arches above window openings; original leaded windows in gable.

For more information see designating by-law 150-09 (Gormley HCD)

**28 Gormley Road East** Ward 3  
**George W. Baker House** DES

Moulded cement block; 2 storeys; 1908 (v); side hall; Queen Anne Revival; quoins; convex mansard roof; decorative concrete lintels; transomed windows; dentilled frieze; corner verandah with conical roof on fluted columns, 1915 (v); block 1 storey side wings; George W. Baker, cement block manufacturer.

For more information see designating by-law 150-09 (Gormley HCD)





### 33 Gormley Road East Ward 3

#### George T Hills House DES

Frame; red brick veneer; 2 storeys; 1922 (v); L-shaped; Queen Anne Revival; 2 storey bay window; gable roof with pent eaves; art glass; wrap-around verandah with conical-roofed corner pavilion; gable-roofed porch with pent eave; porch & verandah on Tuscan columns on brick pedestals; George T. Hilt, gardener.

For more information see designating by-law 150-09 (Gormley HCD)



### 37 Gormley Road East Ward 3

#### DES

Various; 1-5 storeys; 1952; Unilock precast concrete plant; successor to George Baker's North American Cement Block and Tile Company.

For more information see designating by-law 150-09 (Gormley HCD)



### 38 Gormley Road East Ward 3

#### William Bestard House DES

Moulded cement block; 2 storeys; c1909(v); side hall; Queen Anne Revival; hip roof; hip-roofed front dormer; transomed windows; amber and art glass; diamond-textured block; quoining and belt courses; decorated concrete lintels; flat-roofed polygonal corner verandah on heavy square concrete posts; William Bestard, mechanic. 1 storey rear addition.

For more information see designating by-law 150-09 (Gormley HCD)



### 48 Gormley Road East Ward 3 Jabez Thomson House DES

Timber frame; aluminum siding; 1½ storeys; c1860; 3-bay; Classic Ontario; transomed front window; hip-roofed verandah on square posts; relocated from Vinegar Hill, c1908; Rear addition; Eva May Thompson and Jabez Thompson, section foreman.

For more information see designating by-law 150-09 (Gormley HCD)



### 49 Gormley Road East Ward 3 A: Skating Rink Changeroom & Bank House DES

Frame; stucco; 1½ storeys; c1925; 3-bay with centre door; gable front; shed-roofed side dormer; transomed front window; former skating rink change room; bellcast verandah and bargeboards added.



### B: North American Cement Block & Tile Co. DES

Moulded cement block; stuccoed front; 2 storeys; c1907; gable roof; water tank for filling steam engines; North American Cement Block and Tile Co, George W. Baker, proprietor; later general store, Bank of Commerce and Massey Ferguson outlet. Enclosed porch added; crenellated parapet removed. Former Antique Store in the 1970s.

For more information see designating by-law 150-09 (Gormley HCD)





**106 Gormley Road West Ward 3**  
**Joseph Mannock House DES**

Frame; aluminum siding; 1 ½ storeys; c1855; 3-bay; low-pitched gable roof; John Heise; relocated by Joseph Mannock, labourer, 1907 from J. Leary property; Originally vertical siding; windows altered; rear addition.

For more information see designating by-law 150-09 (Gormley HCD)



**120 Gormley Road West Ward 3**  
**Gormley Missionary Church DES**

Brick; red, painted white; 1 storey with raised basement; 1931(v); steep gable roof; tall, paired rectangular windows; Gormley Missionary Church. Facade altered; side addition, 1963.

For more information see designating by-law 150-09 (Gormley HCD)



**132 Gormley Road West Ward 3**  
**The Parsonage DES**

Brick; 1 ½ storeys; c1922(v); Cape Cod cottage; 3 bays, central entry, dormers above the side bays; right bay has archetypal post WW2 picture window flanked by narrow double-hung flankers; left bay has triple casement replacing what was pair of double-hung windows.

For more information see designating by-law 150-09 (Gormley HCD)



**146 Gormley Road West Ward 3**  
**Jeremiah Lyons House DES**

Frame; red brick veneer; 2 storeys; c1909(v); centre hall; Foursquare; hip roof with bracketed eaves; hip-roofed front dormer with battered sides; transomed windows with leaded glass; hip-roofed verandah on Tuscan columns on brick pedestals; Jeremiah Lyons, railroad worker. Rear addition. Carriage shed on property.

For more information see designating by-law 150-09 (Gormley HCD)

**151 Gormley Road West Ward 3**  
**Elizabeth Reaman House DES**

Frame; aluminum siding; 2 storeys; 1916(v); gable front; Queen Anne Revival; gambrel roof with return eaves; shed-roofed side dormers; enclosed pedimented gable-roofed porch, with patterned wood shingles; Elizabeth Reaman, widow. Rear addition.

For more information see designating by-law 150-09 (Gormley HCD)

**158 Gormley Road West Ward 3**  
**Elizabeth Reaman House DES**

Frame; brick; 1 storey; 1957; Modest hipped-roof bungalow; asymmetric façade, recessed entrance bay; large chimney offset to the left rear; added large front-gable element, windows reminiscent of Ontario Gothic tradition.

For more information see designating by-law 150-09 (Gormley HCD)





**169 Gormley Road West Ward 3**  
**Ida Manock Cook House DES**

Frame; mixed, fieldstone on front; 2 storeys; 1930; Several additions to possible Homestead style house; large 4-ganged casement window; asymmetrical front-gable projection with broad recessed entry porch under longer left-hand roof slope. Outbuilding.

For more information see designating by-law 150-09 (Gormley HCD)



**172 Gormley Road West Ward 3**  
**John Leary House DES**

Frame; red brick veneer; 2 storeys; 1909(v); side hall; Foursquare; hip roof with flared eaves; hip-roofed front dormer; 2 storey bay window; hip-roofed verandah on Tuscan columns on brick pedestals; John Leary, farmer. Rear addition. Carriage shed.

For more information see designating by-law 150-09 (Gormley HCD)



**183 Gormley Road West Ward 3**  
**Thomas S. Doner House DES**

Frame; red brick veneer; 2 storeys; c1908(v); centre hall; Foursquare; hip roof; hip-roofed front dormer; tall, narrow flat-headed windows; pedimented gable-roofed porch, with patterned wood shingles, on Tuscan columns on brick pedestals; Thomas S. Doner, Tunker minister. Rear addition. Carriage shed.

For more information see designating by-law 150-09 (Gormley HCD)



**188 Gormley Road West Ward 3****John Forester House DES**

Frame; red brick veneer; 2 storeys; 1909 (v); irregular plan; hip roof w gable-roofed front and side extensions; return eaves; 2 storey bay window; transomed windows & entry with maroon glass; hip-roofed wrap-around verandah on Tuscan columns with brick pedestals, partially enclosed; bargeboards added. John Forrester, farmer. Rear addition. Carriage shed.

For more information see designating by-law 150-09 (Gormley HCD)

**195 Gormley Road West Ward 3****Daniel H. Doner House DES**

Frame clapboard; 2 storeys; c1906(v); Foursquare; hip roof with pedimented gable-roofed front dormer with Palladian window; 3-bay front on both roads; transomed window; amber glass; hip-roofed side verandah; pedimented gable-roofed porch on Tuscan columns on concrete pedestals; Daniel H. Doner, farmer. Rear addition. Stucco.

For more information see designating by-law 150-09 (Gormley HCD)

**200 Gormley Road West Ward 3****Clarence and Maggie (Baker) Doner House DES**

Frame; synthetic clapboard; 1½ storeys; c1905 (v); hipped-roof bungalow; central chimney; projecting hipped-roof wing; new front-facing gables.

For more information see designating by-law 150-09 (Gormley HCD)





**217 Gormley Road West Ward 3**  
**Cober-Johnson Store DES**

Frame; aluminum siding; 2 storeys; 1912 (v); L-shaped; hip roof; Queen Anne Revival; gable-roofed with pent eave front extension; hip roofed side dormer; round-headed attic window; transomed entries; storefront window with curved mullions with acorn drops; hip roof verandahs on Tuscan columns; balcony and panelled wood pedestals on residential verandah; Peter Cober, merchant. 1912-1916 Cober general store. 1919-1955 owned/ operated by Johnsons until closed. Narrow clapboard.

For more information see designating by-law 150-09 (Gormley HCD)



**220 Gormley Road West Ward 3**  
**David Heise House DES**

Frame; red brick veneer; 2 storeys; c1908(v); hip roof; irregular plan; Queen Ann Revival; gable-roofed front and side extensions with pent eaves; transomed windows; amber glass; round-headed attic window; wrap-around hip-roofed verandah; Laxdale House; David Heise, mechanic. Rear addition; Tuscan verandah columns replaced by metal. Carriage shed: Frame; narrow clapboard; 1½ storeys; c1860; Classic Ontario; destroyed by Fire, 2007.

For more information see designating by-law 150-09 (Gormley HCD)



## 107 Hall Street

Ward 4  
DES

### Holmwood: Dr. Langstaff House BP

Frame; clapboard; 2 storeys; 1849(v); 3-bay; centre hall; Loyalist Georgian; gable roof with deep return eaves; east-facing Classical doorcase with sidelights; 6/6 windows; Holmwood; home of the Dr. Langstaff continuously since 1849. Originally stucco and sited on Yonge street; current Classical front door added prior to 1970 relocation.

For more information see designating by-law 222-78



## 123 Hillview Drive

Ward 6  
DES

### David Dunlap Observatory Cultural Heritage Landscape

19th century farmstead overlain with University of Toronto's astronomical research campus. Heritage attributes: Observatory Building and telescope; Administration Building; Elms Lea (Observatory House); Radio Shack and Antenna remnants field; topographic rise and earthworks in Observatory Building area; designed landscaping associated with Administration Building; remnant landscape elements/plantings associated with Elms Lea and U of T's Department of Forestry's experimental tree plantation.

For more information see designating by-law 100-09, amended by 28-17



(York Maps, 2018)





## 123 Hillview Drive Ward 6

### **A: David Dunlap Observatory DES**

Masonry & metal; 2 storeys; 1935(v); circular plan; dome roof; flat pilasters on walls; projecting entry with double 3-panelled doors and 3-part transom; largest telescope in Canada; University of Toronto; named in honour of David Dunlap.



### **B: David Dunlap Admin Building DES**

Broken-faced ashlar & smooth limestone; 2 storeys; 1935(v); rectangular plan with projecting 2 storey frontispiece & canted 2 storey bay on ends; Georgian Revival; flat roof w centre dome and smaller domes at both ends; central 6-panel door with Adam doorcase; 12/12 and 8/12 windows; stone quoins, belt courses, decorative details, architraves; central Palladian window; 1/2-round porch with classical detailing.



### **C: Elms Lea & Alexander Marsh House DES**

Brick; patterned red/buff; 2 storeys; c1860; Classic Ontario; door with round-arched transom in centre gable; gable roof w bracketed eaves & return eaves; transomed entry with sidelights; French doors on either side of entry; circle attic windows; 6/6 windows; balcony and porch on octagonal posts; brick 1 1/2 storey rear wing; Elms Lea; Alexander Marsh. Original plans show wrap-around bellcast verandah on octagonal posts.

For more information see designating by-law 100-09, amended by 28-17



## 630 King Road

Ward 1

### John Love House

DES

Timber frame/vertical plank; stucco; 1 ½ storeys; c1830; 3-bay; Georgian; gable roof with return eaves; entry with early 6-panel door and 3-light rectangular transom; small casement windows in gable ends; rear 9/6 window; Love family of Love's Corners. 1 storey rear addition. Formerly known as 158 King Road.

For more information see designating by-law 95-13

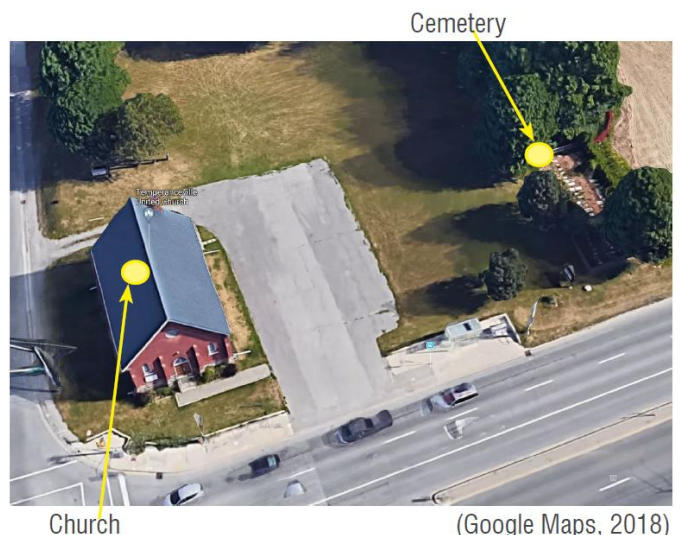


## 734 King Road

Ward 1

### Temperanceville (United) Church & Cemetery

Brick; dark red; 1897(v); rectangular plan; Gothic Revival; steep gable roof with circular vent in front gable; buttresses; lancet windows; central double door with Gothic transom; Temperanceville Methodist Church. Cemetery from c1835.







## 550 Langstaff Road **Ward 6**

### **Isaac Reaman House**

Frame; red brick veneer; 1½ storeys; 1905(v); side hall; irregular plan; gable roof with flattened peak; transomed windows; oval window; umbrage; Isaac Reaman. Frame 1 storey rear addition.



## 39 Leisure Lane **Ward 4**

### **Tyndall Farmhouse** **WP**

Brick; painted; 2 storeys; 1914(v); side hall; hip roof; shed-roofed dormers; oval window; curved wraparound verandah on Tuscan columns on brick pedestals; Tyndall farm house. Sunroom addition.



## 9481 Leslie Street **Ward 3**

### **Henricks-Brodie House** **DES**

Coursed fieldstone with red brick voussoirs; 2 ½ storeys bank house; 1834(v); 4-bay; gable roof with return eaves; gable-roofed front dormer; off-centre entry; two 6/6 and two 12/12 windows; Christian Hendricks; Rose Brodie (nee Hendricks). Early 20<sup>th</sup> century porch.

[For more information see designating by-law 152-08](#)



**9550 Leslie Street** **Ward 3**  
**Headford (United) Church** **DES**

Brick; patterned red/buff; 1882(v); Gothic Revival; square central tower with flat roof and balustrade; raised basement; buttresses; Gothic windows with coloured glass accents; basement entrance; rose window on rear wall; Headford Methodist Church. Original spire destroyed by lightning, 1914.

For more information see designating by-law 72-98, amended by 210-98



**9550 Leslie Street** **Ward 3**  
**Headford (United) Cemetery** **DES**

Marble and granite headstones; c1850; Includes graves of the congregation's founding members.

For more information see designating by-law 72-98, amended by 210-98



**9835 Leslie Street** **Ward 3**  
**William P. Munro**

Brick; patterned red/buff; 1 ½ storeys; c1875; T-shaped; Picturesque; canted front bay window; centre gable on stem of T; bellcast verandah; brick 1 storey rear wing from east gable end of T. Formerly known as 9801 Leslie Street.







## 9853 Leslie Street

Ward 3

### Patrick Kelly House

Brick; patterned red/buff, buff on rear wall; 1 ½ storeys; c1875(v); L-shaped; Gothic Revival; transomed entry; Gothic window with trefoil sash, in front gable; 2 storey canted front bay window; segmental windows; Patrick Kelly, mason. Frame 1 storey side addition.



## 9861 Leslie Street

Ward 3

### Headford P.O. and Store Remnant

Frame; stucco, and wood shingles; 1 ½ storeys; c1860; side hall; gable roof with shed-roofed front dormer; 1 ½ storey rear wing. Originally 1 storey, clapboard, 3-bay; once attached to Headford Post Office and store, now demolished; completely remodelled, 1940.



## 9875 Leslie Street

Ward 3

### John Montgomery House

DES

Frame; t and g vertical siding; 1 ½ storeys; c1850; Classic Ontario with Gothic window in centre gable; bargeboards; 1 storey rear wing; former Methodist Church manse.

For more information see designating by-law 64-03, amended by 31-09



## 9893 Leslie Street

Ward 3

### Horner House

Brick; stucco; 2 storeys; c1909; Foursquare; hip roof with flared eaves and hip-roofed dormers; side square bay window; enclosed shed-roofed verandah. Side and rear additions.



## 9950 Leslie Street

Ward 3

### Horner Cemetery

BP  
DES

White marble headstone; 1825; The burial of at least seven members of the Horner family. Block 480 Plan 65M 3306

For more information see designating by-law 113-03



## 10200 Leslie Street

Ward 3

### Sylvan Gables: Lackie-Watford House

Frame; stucco; 1 ½ storeys; c1865; gable roof with tight eaves; 9/9 and 6/6 windows; pediment-headed trim; Major additions c1930; hip-roofed wall dormers added; Sylvan Gables; Silver Stream Farms. Barn complex and second residence on property.







**10251 Leslie Street**      **Ward 3**  
**George Barker House**      **DES**

Fieldstone; 2 ½ storeys; c1934(v); gable roof; shed-roofed verandah on stone piers; fieldstone side wing. George Barker. Two Silos and barn complex property.

For more information see designating by-law 151-08



~~10961 Leslie Street~~      **Ward 3**  
**16 Bawden Drive**      **DES**  
**John Hilts House**      **BP**

Fieldstone with red brick voussoirs; 1 ½ storeys; c1840; Georgian; gable roof with return eaves; gable-roofed dormers; 6/6 windows; verandah with treillage. Sensitive renovations and additions. Formerly known as 10991 Leslie Street. Shed on property.

For more information see designating by-law 19-08, amended by 53-17



**11121 Leslie Street**      **Ward 3**  
**John McCague House**      **DES**  
**BP**

Brick; buff; 1 ½ storeys; c1865; 5-bay; Georgian; gable roof; transomed entry with sidelights with delicate tracery; 6/6 windows; offset frame 1 storey rear wing. John McCague. Driveshed: frame; 1 ½ storeys; 6/6 windows; hexagonal belfry. Barn on property.

For more information see designating by-law 20-08, amended by 54-17



**11225 Leslie Street**      **Ward 3**  
**Markham S.S. No 4**      **DES**

Brick; painted; 1 storey; c1868; Italianate; one-room school house; gable front; round-headed windows, re-sashed; S. S. No 4, Markham. Brick 1 storey addition to front and north.

For more information see designating by-law 55-07



**11644 Leslie Street**      **Ward 3**  
**Horner House**

Frame; board and batten (resided); 1 ½ storeys; c1880; Classic Ontario with round-headed door opening with paired Gothic transom lights, in centre gable; Classical doorcase; doors with paired, round-headed lights; 1 storey shed-roofed rear addition; Horner family.



**11715 Leslie Street**      **Ward 3**  
**A: Forster Phylis Rawlinson Log House**      **DES**

Hewn log; stucco; 1 ½ storeys; c1830; 3-bay; Georgian; gable roof; 6-panel door; 6/6 windows; fieldstone 1 storey rear wing with red brick window surrounds; George Forster; Tentone Farms. Second residence on property.

For more information see designating by-law 193-96







## 11715 Leslie Street Ward 3

### **B: Forster Phylis Rawlinson Barn Complex** DES

Frame; clapboard; c1830; U-shaped; gable-roofed; raised fieldstone foundation.

For more information see designating by-law 193-96



## 12119 Leslie Street Ward 3

### **Doner House**

Frame; aluminum siding; 2 storeys; c1855; gable front; frame 1 ½ storey side wing with gable roof, and gable-roofed wall dormer with bargeboards and finial; Doner family. Altered. Barn on property.



## 12140 Leslie Street Ward 3

Brick, red; 2 ½ storeys; early 20th century; American Foursquare; elongated shape; hipped roof and south facing dormer window; additions to the east and west. Barn on property.



**12216 Leslie Street**      **Ward 3**  
**Christian Hoover House**

Frame; aluminum siding; 1 ½ storeys;  
 c1865; 3-bay; frame 1 ½ storey rear  
 and side wings; Christian Hoover.  
 Shed-roofed enclosed verandah. Barn  
 on property.



**12623 Leslie Street**      **Ward 1**  
**Hoover House**

Frame; aluminum siding; 2 storeys;  
 c1860; 4-bay; side hall; gable roof; 6/6  
 windows; hip-roofed verandah on  
 chamfered posts; frame 1 storey gable-  
 roofed rear wing; Shed-roofed addition  
 in rear. Barn on property.



**13010 Leslie Street**      **Ward 1**

Frame; board and batten (resided); 1 ½  
 storeys; c1860; 3-bay; gable roof.  
 Shed-roofed front addition and front  
 dormer; 1 storey rear addition; altered.







### 13076 Leslie Street Ward 1

#### **George Sproxton House & Toronto Muslim Cemetery**

Brick; patterned red/buff; 1 ½ storeys; c1855; 3-bay; Georgian; transomed entry with diamond motif glazing; 6/6 windows; shedroofed porch; brick 1 storey side wing; possibly George Sproxton. The building is situated on the site of the Toronto Muslim Cemetery, the first Muslim cemetery in the Greater Toronto Area.



(Google Maps, 2018)

### 13251 Leslie Street Ward 1

#### **Fairmont: Christopher Smith House**

Brick; painted; 1½ storeys; c1880; Classic Ontario with Gothic window and bargeboards in centre gable; brick 1 ½ storeys rear wing; frame 1 ½ storey rear wing; Christopher Smith; Fairmont. Large frame 1 ½ storey side addition. Barn Complex on property.



### 13256 Leslie Street Ward 1

#### **David Baker House**

Frame; stucco; 1 ½ storeys; c1860; gable roof; 1½ storey rear wing; possibly David Baker. Gable-roofed front dormer; 1 storey addition to front; Chestnut Hills Golf Club; altered. Barn complex on property.



**13265 Leslie Street**      **Ward 1**  
**Christopher Smith House**

Brick; patterned red/buff, Flemish bond on front; 1 ½ storeys; c1860; T-shaped; Classic Ontario; transomed entry with sidelights filled in with brick; possibly Christopher Smith. Front gable not original.



**13560 Leslie Street**      **Ward 1**  
**John Forrester House**

Frame; buff brick veneer; 1 ½ storeys; c1880; L-shaped; Picturesque; gable roof; front bay window with mansard roof with segmental butt shingles; segmental openings; frame 1 storey rear wing; John Forrester. Partial building remains.



**13561 Leslie Street**      **Ward 1**  
**John Smith House**

Frame; brick veneer, painted; 1 ½ storeys; c1880; Classic Ontario with Gothic window, bargeboards and finial in centre gable; bellcast verandah with elliptical arches and drops; brick 1 ½ storey frame saltbox rear wing; John Smith.







## 16-18 Lorne Avenue **Ward 2**

### **William Trench House**

Brick; buff; 1 ½ storeys; c1888; L-shaped; gable roof; canted bay window with mansard roof; segmental openings. 20th century enclosed porch. East wing: brick; buff; 1 ½ storeys; c1895; recessed entry; art glass in window transom. William Trench, carriage maker and reeve. Brick 2 story rear addition.



## 24 Lorne Avenue **Ward 2**

### **T.H. Trench Rental House**

Frame; red brick veneer; 1 ½ storeys; c1912(v); hip roof with hip roofed dormers; attached brick garage. T. H. Trench, for rental.



## 31 Love Court **Ward 3**

### **Cyrus-Mapes House**

**DES**

Frame; wood siding; 1 ½ storeys; c1861; Classic Ontario with gothic window in center gable; gable hip-roofed verandah on thin columns; 6/6 1st storey windows; 1 storey side wing. Relocated from 1577 Major Mackenzie Drive East. Formerly known as 9920 Leslie Street.

For more information see designating by-law 156-98



## 32 Love Court

Ward 3

### Jacob Horner House

DES

Timber frame; aluminum siding; 1 ½ storeys; c1840; Classic Ontario; off-centre entry w sidelights; 6/6 windows; pediment-headed trim; frame 1 ½ storey rear wing. Jacob Horner.

Formerly known as 9940 Leslie Street.

For more information see [designating by-law 8-96](#)



## 117 Lucas Street

Ward 4

### Frederich Crawford House

Frame; asbestos shingles; 1 storey; c1850; L-shaped; gable roof with return eaves; 2/2 flat-headed windows. Originally rectangular plan, clapboard; additions. James Langstaff c1856; Fred Crawford, 1870.





## 16 Macleod Estate Court **Ward 1**

**Drynoch: Capt. Donald Martin**

**Macleod**

**DES**

Brick; red; 1 ½ storeys; c1845; shallow U-shaped, front facing; Classical Revival; gable roof with return eaves; entry with sidelights with Regency glazing; 6/6 windows; hood moulds over upper windows; Drynoch; Capt Donald Martin Macleod; architect possibly John Edey of Thornhill. Brick addition to east side, c1915; frame addition to west side by B. Napier Simpson, c1970.

[For more information see designating by-law 88-17](#)



## 45 Major Mackenzie Drive

**East**

**Ward 5**

Masonry; stucco; 1 ½ storeys; c1920; side hall; gable roof with clapboard in gables; gable-roofed dormers. Flat roofed sunroom addition.



## 53 Major Mackenzie Drive

**East**

**Ward 5**

Frame; red rug brick veneer; 1 ½ storeys; c1925; side hall; Queen Anne Revival; gable front with pent eave; enclosed shed-roofed verandah on square tapered posts on brick pedestals.



## 57 Major Mackenzie Drive East

Ward 5

Frame; red & brown rug brick veneer; 2 storeys; c1925; side hall; Queen Anne Revival; gable front with pent eave; gable-roofed porch on brick piers.

## 58 Major Mackenzie Drive East

Ward 2

### George W. Baker House

Moulded concrete block (lower storey) and frame with stucco (upper storey); 1913(v); Foursquare; hip roof with shed-roofed front dormer; moulded concrete lintels; smooth concrete block quoins; false ½-timbering; hip-roofed verandah on fluted concrete columns on moulded concrete block pedestals; George W. Baker, builder and proprietor, North American Cement Block & Tile Co.

## 64 Major Mackenzie Drive East

Ward 2

### George W. Baker Cottage

Moulded concrete block; 1 storey; 1913(v); side hall; Bungalow Cottage; hip roof with shed-roofed front dormer; smooth concrete block quoins; verandah under main roof, on moulded concrete block piers; George W. Baker, builder and proprietor, North American Cement Block & Tile Co.







## 72 Major Mackenzie Drive East Ethel Street House **Ward 2**

Frame; red brick veneer; 1 ½ storeys; c1916(v); side hall; Queen Anne Revival; gable front with pent eave and wood-shingled gable; diamond motif glazing in transom; art glass; enclosed shed-roofed verandah on square posts on brick pedestals; C. H. Sanderson, builder, to Ethel Street, 1921.



## 1600 Major Mackenzie Drive East Ward 3 **DES**

### **Ambercroft: Adam Henricks HouseBP**

Frame; buff brick veneer; 1 ½ storeys; c1885; L-shaped; Picturesque; gable roof; gable on stern of ell; canted bay windows with mansard roofs; segmental openings; entry with sidelights; bellcast verandah on reproduction treillage; Ambercroft. Entry altered; frame 1 ½ half storey addition.

[For more information see designating by-law 123-99](#)



## 1621 Major Mackenzie Drive East Ward 3 **DES**

### **Old Mill Farm: David Hislop HouseBP**

Frame; buff brick veneer; 1 ½ storeys; c1885; L-shaped; Picturesque; gable roof; gable on stern of ell; canted bay window with mansard roof; segmental openings; Ambercroft.

[For more information see designating by-law 143-97, amended by 68-06](#)





## 86 Major Mackenzie Drive West

Ward 4

### Highland Cottage: Ada Mackenzie House

DES

Frame; clapboard; 1 ½ storeys; c1840; 3-bay; saltbox; Classical Revival; return eaves; Classic doorcase; 6/6 windows; frame 1 storey side wing; J. R. Arnold; Ada Mackenzie, c1940; Highland Cottage. Major alterations.

For more information see [designating by-law 116-08](#)



## 12 Mathias Court

Ward 3

DES

BP

### John Bestard House

Brick; buff; 1 ½ storeys; c1890; cruciform-shaped; Queen Anne Revival; gable roof; 2 storey front bay window decorated with sunburst-motif brackets & panelled barge-boards with dentils and bulls-eye blocks; art glass in transomed windows; Merry Brook Farm. Additions in rear. Formerly known as 11715 Bayview Ave.

For more information see [designating by-law 120-99](#)



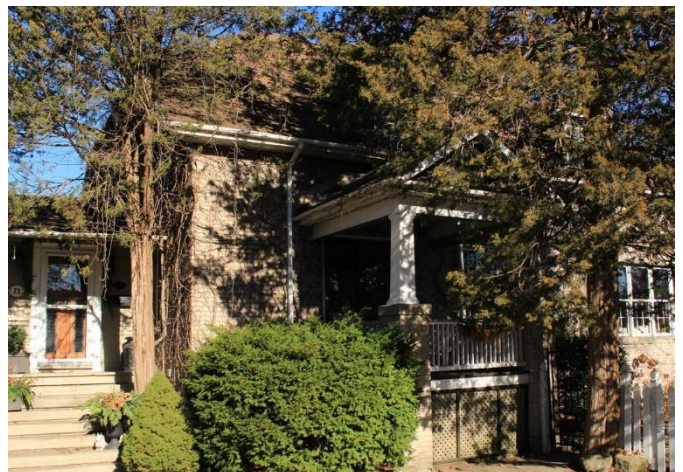
## 73 Mill Street

Ward 4

### Gertude Grant House

WP

Frame; grey brick veneer with red mortar; 1 ½ storeys; c1920; side hall; truncated gable roof; hip-roofed dormers; possibly Gertrude Grant. Major extension. Harvey Kelley, clerk 1920; S. Barraclough, constable 1925.





## 81 Mill Street

**Ward 4  
WP**

Frame; aluminum siding; 1 ½ storeys; c1923; side hall; gable roof; gable-roofed front dormers; shed-roofed porch on square posts on brick pedestals. Jesse Dewsbury, carpenter 1923.



## 82 Mill Street

**Ward 4**

Frame; aluminum siding; 1 storey; c1946; low-pitched gable roof, almost flat; 1 of 3 post-war prefabricated houses on Mill Street.



## 159 Mill Street

**Ward 4  
WP**

Frame; clapboard; 1 storey; c1845; Ontario Cottage; hip roof; entry with sidelights and remnants of Classical doorcase; 12/12 windows; Thomas Smith. Dr. John Duncumb c1867.



## 164 Mill Street

Ward 4

### Nicholas Johnson House

Frame; clapboard; 1 ½ storeys; c1845; 3-bay; Classical Revival; gable roof with return eaves; bracketed eaves; Classical doorcase with sidelights and panelled reveals; eared window architraves with pedimented heads. Centre gable and gable-roofed porch added. Nicholas Johnston Cooper c1845.



## 184 Mill Street

Ward 4

### Log House

Log; hewn & dovetailed; 1 ½ storeys; 19th century; asymmetrical 3-bay; gambrel roof; shed-roofed front dormer. Log 1 storey garage. Relocated and renovated c1940.



## 249 Mill Street

Ward 4

### Langstaff Millworker's Cottage WP

Frame; buff brick-clad with red mortar; 1 ½ storeys; c1850; Georgian; gable roof with return eaves; shed-roofed rear wing; Langstaff mill worker's cottage; Andrew Mager, Sash and Door Factory, 1874.





## 255 Mill Street

Ward 4

**Mill House: John Langstaff Jr.** DES  
WP

Frame; clapboard; 1 storey; c1847(v); 5-bay; Georgian; gable roof with return eaves; Classical doorcase; windows abut front door; 6/6 windows; John Langstaff Jr., sawmill owner. Frame 1 storey rear addition.

[For more information see designating by-law 115-14](#)



## 317 Mill Street

Ward 4

**Jesse Good House, Building A** WP

Brick; patterned buff/red; 1 ½ storeys; 1885(v); L-shaped; Picturesque; canted bay window with mansard roof; segmental windows; belt course of diagonally-set bricks; Jesse Good. 20th century enclosed wrap-around verandah; frame 1 ½ storeys addition, 1991. Barn on property; originally part of match factory at Mill and Bathurst Street property.



## 369 Mill Street

Ward 4

**John Woods House** WP

Frame; brick veneer, painted; 2 storeys; 1915(v); Foursquare; side hall; hip roof; gable-roofed front dormer; John Woods.



## 880 Nineteenth Avenue

Ward 4

### Frank Dolan House

Frame; aluminum siding; 2 storeys;  
19th century; two-storey Ontario  
farmhouse.



## 1610 Nineteenth Avenue

Ward 3

### John Nigh House

Frame; aluminum siding; 1 ½ storeys;  
c1860; T-shaped; gable roof; John  
Nigh, Mennonite farmer. Barn on  
property.



## 1690 Nineteenth Avenue

Ward 3

### Willow Creek House

Brick; painted; 2 storeys; c1910;  
irregular plan; gable roof with pent  
eave; Willow Creek.





## 1751 Nineteenth Avenue

Ward 3

### **Bellbourne House**

Frame; buff brick veneer; 1 ½ storeys;  
c1901; 3-bay; gable roof; frame 1  
storey rear wing with belfry;  
Bellbourne. Formerly known as 1767  
Nineteenth Avenue. Partial building  
remains.



## 34 Oxford Street

Ward 4

DES

BP

### **James Simpson Jr. House**

Frame; drop clapboard; 1 ½ storeys; c1865; Classic Ontario with broken pediment in centre gable; return eaves; James Simpson Jr. Originally stucco, with transomed entry and sidelights. Rear wing: poured concrete; “ashlar” stucco; 1 storey; partially side hill; Classical doorcase; exterior entrance to basement. Relocated to site.

For more information see designating by-law 410-88





## 40 Pearson Avenue

Ward 5

### Richvale Public Library

Brick; patterned red/buff; 1 storey;  
1982(v); Post Modern; gable roof;  
conical-roofed lantern; Richvale Public  
Library; Phillip Carter, architect.



## 64 Powell Street

Ward 4

### Abraham Ransom House

Timber frame; clapboard; 1 ½ storeys;  
c1850, renovated c1870 to Classic  
Ontario; shed-roofed verandah on  
Tuscan columns; Abraham Ransom.  
Bargeboards added in centre gable;  
frame 1 ½ storey rear addition.



### 32 Richmond Street Ward 4

#### William Harrison House

Brick; patterned buff/red; 1 ½ storeys; 1881(v); L-shaped; Gothic Revival; entry with sidelights; segmental windows; Gothic windows on 2nd storey; canted bay window with mansard roof; finials and bargeboards; hip-roofed verandah; frame 1 ½ storey rear wing; William Harrison, 2nd reeve, local historian; one of 3 houses comprising Harrison's Corner. Shed-roofed, enclosed rear verandah; front verandah treillage removed 1990.



### 42 Richmond Street Ward 4

#### Mill Worker's Cottage

Frame; vertical t and g siding; 1½ storeys; c1875; Georgian; gable roof; Classical doorcase; square bay window, added c1920; hiproofed verandah on square posts; mill worker's cottage, moved from Trench street in 1909 as an income property for Clara Harrison; Fred Leece, 1st tenant; pivotal house at Harrison's Corner. Originally stucco, with frame 1 storey rear wing; frame 1 ½ storey rear addition.





**55 Richmond Street**      **Ward 4**  
**Maple Villa: Benjamin Davidson**  
**House**      **WP**

Frame; insul-bric; 1 ½ storeys; c1837; renovated to Classic Ontario, c1890; pierced bargeboards with spindle-work, in centre gable; square bay window, added c1915; frame 1 ½ storey rear wing; Benjamin Davidson, millwright and carpenter; Henry F. Hopper, butcher, 1903; Maple Villa. Gable-roofed 20th century porch; recent alterations to rear wing.



**62 Richmond Street**      **Ward 4**  
**Nathaniel Wellwood House**      **WP**

Frame; grey brick veneer and stucco; 2 storeys; 1915(v); side hall; Foursquare; hip roof with hip-roofed front dormer; art glass; hiproofed verandah on Tuscan columns on brick pedestals; Nathaniel Wellwood, minister. Frame 1 storey side addition.



**66 Richmond Street**      **Ward 4**  
**Archibald Campbell House**      **WP**

Brick; grey; 1 ½ storeys; 1914(v); side hall; gable roof with pent eave and wood-shingled front and side gables; transomed front window; wrap-around hip-roofed verandah on Tuscan columns on brick pedestals; Archibald Campbell, blacksmith.



**98 Richmond Street**      **Ward 4**  
**Mortson-Hogg House**      **WP**

Brick; buff; 1 ½ storeys; c1885; T-shaped; Picturesque; gable roof; canted front and side bay windows; Moses Gamble and Mr. Mortson. Enclosed sunporch over verandah. Rear wing: frame; 2 storeys; c1855 and c1920; eared trim on lower floor; John Watts storey, carpenter. Originally 1 storey; 2nd storey added by Alex and Ida McCague. Helen J. Hogg, Astronomer.



**103 Richmond Street**      **Ward 4**  
**Eliza Gaby House**      **DES BP**

Frame; clapboard; 1 ½ storeys; c1886 (v); Classic Ontario; 2/2 and 6/6 windows; 1 ½ storeys rear wing; Levi Gaby for Mrs. Eliza Gaby. Originally 1 storey rear wing and bellcast verandah; gableroofed enclosed 20th century porch.

For more information see designating by-law 134-95



**104 Richmond Street**      **Ward 4**  
**Mrs. Peter Bassingthwaite House**      **WP**

Brick; red; 1 ½ storeys; c1913(v); 3-bay; Arts & Crafts; gable roof with exposed rafter ends; hip-roofed porch; brick 1 ½ storey rear wing; Mrs. Peter Bassingthwaite, widow.





**110 Richmond Street**      **Ward 4**  
**Gordon H. Sloan House**      **WP**

Frame; red brick veneer; 1 storey; 1922(v); side hall; Arts and Crafts bungalow; gable roof with pent eaves and exposed rafter ends; shed-roofed front dormer; enclosed sunporch under main roof; G. Sloan.



**111 Richmond Street**      **Ward 4**  
**Harrison-Gaby House**      **WP**

Brick; patterned buff/red, painted; 1 ½ storeys; c1850 & c1885; T-shaped; Picturesque; transomed entry; canted bay window with mansard roof; bellcast verandah on turned posts, with fretwork; Martha Harrison, 1850; Frederick Gaby, 1859; Levi Gaby, 1886. Frame 1 storey rear addition.



**118 Richmond Street**      **Ward 4**  
**Grace Southmayd House**      **WP**

Frame; multi-coloured brick veneer; 1 ½ storeys; 1922(v); Arts and Crafts; gable roof with bracketed eaves; gable-roofed front dormer; transomed front window; square side bay window; shed roofed verandah on tapered square posts on brick pedestals; Gordon H. Sloan for Grace Southmayd.





**121 Richmond Street**      **Ward 4**  
**Blacksmith Shop-John D. Sanders House**

Frame; brick veneer; 1½ storeys; c1920 (v); gable front with side hall; staggered wood-shingled gable; side gable; square side bay window; transomed front window; verandah with hipped roof and tapered square posts on brick pedestals; John D. Sanders. Blacksmith shop.

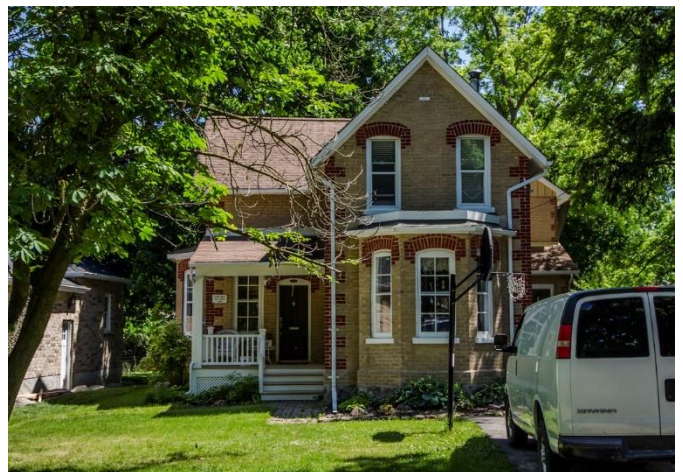
**124 Richmond Street**      **Ward 4**  
**Leslie Innes House**      **WP**

Brick; patterned buff/red; 1 ½ storeys; 1888(v); L-shaped; Picturesque; gable roof; storm door with coloured glass accents; date stone; mansard roofed canted bay windows; shed roof porch on square posts; frame 1½ storey rear wing; Leslie Innes, sawmill owner. Side and rear addition.

**131 Richmond Street**      **Ward 4**  
**John L. Innes House**      **DES BP**

Frame; clapboard; 2 storeys; c1903(v); 3-bay; Georgian Revival; hip roof with bracketed eaves; pilaster corner boards; transomed entry with sidelights; 2<sup>nd</sup> storey decorative panel over front door; hip-roofed verandah on restored Tuscan columns; John L. Innes, sawmill owner and contractor; Walter Scott, teacher, 1945. Rear wing: frame; 1 ½ storeys; c1880; possibly George Baker.

For more information see designating by-law 411-86





**132 Richmond Street**      **Ward 4**  
**Harry Innes House**      **WP**

Frame; clapboard and wood shingles; 2 storeys; 1913(v); Foursquare; hip roof with hip-roofed front dormer; frame shed-roofed 1 storey side wing; Harry Innes, sawmill owner and book keeper.



**160 Richmond Street**      **Ward 4**  
**Ella Elder House**      **WP**

Frame; red brick veneer; 1 ¾ storeys; c1920(v); side hall; Lshaped; gable roof; diamond-shaped stone ornament in gable; enclosed front porch; Geo H. Denby.



**165 Richmond Street**      **Ward 4**  
**James Freek House**      **WP**

Brick; buff; 1 ½ storeys; c1860; 3-bay; gable roof with small gable-roofed front dormers; 6/6 windows; brick 1 storey gable and shed-roofed rear wings, bellcast verandah with treillage; James Freek, brickmaker. Originally 2-bay, side hall; Rear additions. Ella Elder, widow 1913. Barn on property.



## 174 Richmond Street **Ward 4** **WP**

Frame; aluminum siding; 1 ½ storeys; c1891(v); 3-bay; gable roof; frame 1 ½ storey rear wing; William Teil, labourer. Re-sashed; rear addition.



## 210 Richmond Street **Ward 4** **DES** **BP**

**Col. David Bridgeford House**  
Frame; aluminum siding; 1 ½ storeys; c1860; Classic Ontario. Altered. Rear wing: brick; 1 ½ storeys; c1848. Originally 1 storey; extension to west side. Col David Bridgeford, reeve of Vaughan, Richmond Hill councillor.

For more information see designating by-law 206-94



## 273 Richmond Street **Ward 4** **Dancy-McCarter House** **WP**

Frame; balloon framing; aluminum siding; 1 ½ storeys; c1870; Classic Ontario; frame 1 ½ storey rear wing with centre gable. Hip-roofed 20th century verandah; frame 1 storey gable-roofed side addition to rear wing. Originally John Dancy, carpenter, for Pockeridge Dancy, possibly for Peter McCarter. Relocated from Wood Lane in c1911.





### 297 Richmond Street **Ward 4** **William Innes House** **WP**

Frame; asbestos shingles; 2 storeys; c1882 and c1893 (front wing); side hall; irregular plan; gable roof; 2 storey .square bay window with leaded glass transom; round-headed windows; panelled bargeboards with bulls-eye blocks and dentils; ½-round vent; built by Leslie Innes for son William.



### 33 Roseview Avenue **Ward 2** **Ira D. Ramer House** **DES BP**

Frame; red brick veneer; 2 storeys; 1914(v); side hall; Foursquare; hip roof with front gable; art glass; shed-roofed verandah on Tuscan columns on brick pedestals; Ira D. Ramer, grain dealer. Re-sashed.

For more information see designating by-law 59-11



### 34 Roseview Avenue **Ward 2** **Charlotte Mortson House**

Brick; red; 2 storeys; 1914(v); side hall; Foursquare; hip roof with shed-roofed dormers; Charles Hickson, builder, to Charlotte Mortson. Enclosed verandah added.



**38 Roseview Avenue      Ward 2****Donald Watson House      WP**

Brick; red; 2 storeys; 1914(v); side hall; Foursquare; hip roof with shed-roofed dormer; enclosed pedimented porch; Albert Hyslop, to David Watson, gentlemen.

**43 Roseview Avenue      Ward 3****George D. Agar House      WP**

Frame; brown brick veneer; 2 storey; c1926 (v); side hall; gabled roof porch with staggered wood shingled gable; Chas H Sanderson to George D Agar.

**47 Roseview Avenue      Ward 2****Henry Bond House      WP**

Frame; red brick veneer; 2 storeys; 1914(v); side hall; Foursquare; hip roof with shed-roofed dormer; oval window; Henry Bond. Enclosed gable-roofed porch added.





## 48 Roseview Avenue Ward 2

### Orloff Mallory House

Frame; aluminum siding; 1 ½ storeys; c1926(v); irregular plan; gable front; Orloff Mallory, carter. Front and side additions; altered.



## 51 Roseview Avenue Ward 2

### Arthur Elson House WP

Frame; multi-coloured brick veneer; 1 ½ storeys; 1921(v); side hall; Bungalow Cottage; gable roof; shed-roofed front dormer; entry with sidelights; transomed front window; verandah under main roof, on square grouped posts; Chas H. Sanderson, builder, to Arthur Elson, farmer.



## 52 Roseview Avenue Ward 2

### L.R. Bell House WP

Frame; stucco; 2 storeys; c1930; centre hall; hip roof; entry with sidelights; 6/6 windows; gable-roofed porch on square posts on brick pedestals; attached garage. L.R. Bell, dentist.



**55 Roseview Avenue**      **Ward 2**  
**Henry Williams House**      **WP**

Frame; aluminum siding; 1 storey;  
1915(v); 3-bay; hip roof; Henry  
Williams, florist.



**59 Roseview Avenue**      **Ward 2**  
**Robert Tyndall House**      **WP**

Frame; red brick veneer; 2 storeys;  
1915(v); side hall; Foursquare; hip roof  
with front gable; hip-roofed porch on  
Doric columns on brick pedestals;  
Robert Tyndall, teamster.



**62 Roseview Avenue**      **Ward 2**  
**E.P. Quantz House**      **WP**

Frame; aluminum siding; 2 storeys;  
1915(v); side hall; Queen Anne  
Revival; gable front with pent eave and  
return eaves; shed-roofed verandah on  
Tuscan columns on brick pedestals; E.  
P. Quantz, guard, Langstaff Jail Farm.





**63 Roseview Avenue**      **Ward 2**  
**C.H. Sanderson House**      **WP**

Frame: red and black brick veneer; 2 storeys; c1922; gable front; gable veranda on columns on brick pedestals; Charles H. Sanderson; carpenter.



**66 Roseview Avenue**      **Ward 2**  
**Herbert Cook House**      **WP**

Frame; brown brick veneer; 2 storeys; 1921(v); gable front with side hall; return eaves; shed-roofed dormer; shed-roofed verandah on tapered brick piers; Herbert Cook, florist.



**67 Roseview Avenue**      **Ward 2**  
**Herbert Jackson House**      **WP**

Frame; brick veneer, painted; 2 storeys; 1915(v); side hall; Foursquare; hip roof with pedimented front and side gables; sunroom; shed-roofed porch on Tuscan columns on brick pedestals; William H. Graham, builder, to Herbert Jackson, 1918. Frame 2 storey rear addition.



**68 Roseview Avenue**      **Ward 2**  
**Edgar Sanderson House**

Frame; multi-coloured brick veneer; 2 storey; 1922(v); gable front with side hall; enclosed gable-roofed porch with wood-shingled gable; Edgar Sanderson, carpenter. Garage addition.



**71 Roseview Avenue**      **Ward 2**  
**Wesley Boynton House**      **WP**

Frame; brown brick veneer; 2 storey; 1922(v); side hall; Queen Anne Revival; gable front with pent eave and wood-shingled gable; pedimented porch on tapered square posts on brick pedestals; Wesley Boynton, agent; two trees south of house. Edgar R. Sanderson, builder 1922; William H. McNeely, 1924.



**72 Roseview Avenue**      **Ward 2**  
**Mary Phillips House**      **WP**

Frame; stucco and asphalt shingles; 1 ½ storeys; 1920(v); side hall; gable front with pent eave; enclosed shed-roofed verandah; William H. Graham, builder, to Mary Phillips.





## 75 Roseview Avenue Ward 2

### Frederick N. Hopper House

Frame; red brick veneer; 2 storeys; 1921(v); side hall; Foursquare; hip roof with pedimented front dormer; oval window; hip-roofed verandah on Tuscan columns on brick pedestals; Frederick N. Hopper, machine hand.



## 76 Roseview Avenue Ward 2

### William Burns House

WP

Frame; aluminum siding; 1 ½ storeys; possibly 19th century; Classic Ontario. Enclosed gable-roofed porch; possibly relocated here in 1914 by William Burns. Frame 1 storey rear addition.



## 78 Roseview Avenue Ward 2

### Joseph Leary House

Frame: red brick veneer; 1 ½ storeys; c1925; gable front; enclosed gable-roofed porch; Joseph Leary House; built by C.H. Sanderson.



**79 Roseview Avenue**      **Ward 2**  
**Arthur Wade House**

Frame; aluminum siding and stone veneer; 1 ½ storeys; 1914(v); L-shaped; gable roof with gable-roofed front dormer; Chas and John Hickson, builders, to Arthur Wade, mechanic.



**88 Roseview Avenue**      **Ward 2**  
**Russell Monkman House**      **WP**

Frame; red brick veneer; 1 ½ storeys; c1919(v); gable front with side hall; shed-roofed side dormer; enclosed shed-roofed verandah on square posts on brick pedestals; Joseph Monkman, labourer; Russell Markman, rose grower.



**92 Roseview Avenue**      **Ward 2**  
**Alice F. Sanderson House**

Frame; grey brick veneer with red mortar; 1 ½ storeys; 1923(v); gable front with side hall; shed-roofed dormer; enclosed shed roofed porch; Alice F. Sanderson. Large shed-roofed side dormers added; rear addition.





**96 Roseview Avenue**      **Ward 2**  
**Joseph Monkman House**      **WP**

Frame; board and batten (resided); 1 ½ storeys; 1915(v); steep gable roof with flared eaves; gable front with pent eave and shingled gable; shed-roofed dormers; transomed front window; square bay window; hip-roofed verandah; Joseph Monkman, labourer.



**102 Roseview Avenue**      **Ward 2**  
**William T. Edmonds House**

Frame; vinyl siding; 2 storeys; c1920(v); side hall; Queen Anne Revival; gable roof with pent eaves; shed-roofed verandah on Tuscan columns; William T. Edmonds, florist.



**114 Roseview Avenue**      **Ward 2**  
**William J. Lawrence House**      **WP**

Brick; red; 2 storeys; c1915(v); side hall; hip roof; entry with sidelights; casement windows; hip-roofed porch on square posts; William J. Lawrence, greenhouse owner. Originally directly connected to greenhouses to east.



## 11 Station Road

Ward 3

**Whitney and Eva (Wideman)**

**Johnson House**

DES

Frame; vinyl clapboard; 1 ½ storeys; c1922(v); Cape Cod cottage; steep side gable roof; projecting front-gable wing; low-sloped verandah on square posts projects from the front-gable bay; shed at rear originally "oil house" from General Store, housed two large vats for storage of coal oil. Relocated from Bayview and Highway 7.

For more information see designating by-law 150-09 (Gormley HCD)



## 12 Station Road

Ward 3

**A: David and Jacob Heise Double House**

DES

Frame; insul-bric; 1 ½ storeys; c1908(v); double house; U-shaped, front-facing; gable roof; shed-roofed verandah on square chamfered posts; David W. Heise, mechanic and Jacob A. Heise, lumber man. 2 rear additions.

For more information see designating by-law 150-09 (Gormley HCD)



## 12 Station Road

Ward 3

**B: Eli Mantle Blacksmith Shop**

DES

Brick and frame; 2 storeys; c1840; gable front; 8/8 and 6/6 windows; restored brick forge; blacksmith shop; ruler factory, 1922 extensive fire damage, 2007.

For more information see designating by-law 150-09 (Gormley HCD)





## 26 Station Road

Ward 3

### Station House

DES

Frame; insul-bric; 2 storeys; c1910; side hall; hip roof with wide overhang; 6/6 windows; hip-roofed porch on square posts; Canadian Northern Ontario Railway section-hand's house. Small rear addition.

For more information see designating by-law 150-09 (Gormley HCD)



## 53 St. Laurent Drive

Ward 1

Frame; aluminum siding; 1 ½ storeys; c1915; hip roof; enclosed hip-roofed porch.



Log Cabin

## 400 Stouffville Road

Ward 3

### Former Toronto Ski Club Cabin

Log; 8 over 8 divided windows, c1900; was at one time used by the members of the former Toronto Ski Club. Potentially relocated from Belleville area.



(Google Maps, 2018)

### 430 Stouffville Road Ward 3 Former Toronto Ski Club Cabin

Log; 1.5 storeys; unknown data, was at one time used by the members of the former Toronto Ski Club. Potentially relocated from a different property.



(Google Maps, 2018)

### 1125 Stouffville Road Ward 3 Former Toronto Ski Club Cabin

Log; 1.5 storeys; unknown date; six over six windows; was at one time used by the members of the former Toronto Ski Club. Potentially relocated from a different property.



### 1151 Stouffville Road Ward 3 Former Toronto Ski Club Cabin

Log; 1.5 storeys; unknown date; six over six windows; was at one time used by the members of the former Toronto Ski Club. Potentially relocated from a different property.





### 140 Sunset Beach Road Ward 3

Brick; 1 storey; arts & crafts bungalow; c1915.



## 22 Thomas Legge Crescent

### Ward 1

Brick; 2 storeys; c1890; gable roof; 2 storey square bay windows; enclosed front & side verandahs; 2 storey brick rear wing; Oak Ridges Farm. Concrete block rear addition. Formerly known as 12755 Bathurst Street.



## 71 Trench Street

### Ward 4

#### Brickworkers House

Brick; painted; 1 storey; c1860; Ontario cottage; Classical doorcase, facing east; 6/6 windows; low, brick 1 storey rear wing, c1880; William Powell Jr., brickmaker. Side-hill 2 storey rear addition; site originally a 6 acre brickyard.





### 31 Wright Street

Ward 4

#### Percy Hill House

Frame; red-brown brick veneer; 1 ½ storeys; c1918(v); irregular plan; Arts and Crafts; gable roof with gable roof dormer; shaped exposed rafter ends; side entry with sidelights; square bay window with bellcast roof; enclosed front porch; Gladys and Percy Hill.



### 35 Wright Street

Ward 4

#### Harry Endean House

Frame; orange brick veneer with wood-shingled upper storey; 1 ½ storeys; c1920(v); side hall; gable-roofed front dormer; shed-roofed verandah with peaked arches and grouped square posts on brick pedestals; Edith and Harry Endean.



### 51 Wright Street

Ward 4

#### Richmond Hill High School

DES

Brick; red; 3 storeys, raised basement; 1924(v); 5-bay with projecting centre bays; Collegiate Gothic; raised quoins; patterned brick squares on end wall; limestone date stone, name plaque, string course and coping, embrasures and Gothic recess in stepped parapet; Richmond Hill High School. Originally 2 symmetrical entrances; additions in 1951 and 1960.

For more information see designating by-law 1-98



## 105 Wright Street

Ward 4

### Charles Roe House

WP

Frame; clapboard; 1 ½ storeys; c1921; side hall; gable roof with shed-roofed front dormer; exposed rafter ends; gable-roofed porch on Tuscan columns. Charles Roe, printer.



## 109 Wright Street

Ward 4

### Albert Scott House

WP

Frame; aluminum siding; 1 ½ storeys; c1920; side hall; gable front with double pent eave; gable-roofed side dormers; square bay window; gable-roofed porch with segmental brackets, on square posts. Albert Scott, shoemaker. Large 2 storey rear addition.



## 130 Wright Street

Ward 4

### James Leavy House

WP

Brick; grey with red mortar; 1 ½ storeys; 1921(v); side hall; Queen Anne Revival; gable front with pent eave; shed-roofed verandah on tapered square posts on brick pedestals; John A. Greene to James Leavy, janitor. Re-sashed; 1 storey side addition.





## 131 Wright Street

Ward 4

### John A. Greene House

WP

Brick; red; 1 ½ storeys; c1913(v); side hall; steep gable roof with shed and gable-roofed front dormers; diamond-paned window transoms; enclosed front and side verandahs; J.A. Greene, councillor, then reeve, 1933-39. Brick 1 storey rear wing and other additions.



9993 Yonge Street

Ward 5  
DES  
WP

**John Palmer Sr. House**

Timber frame; drop clapboard; 1 ½ storeys; c1869(v); 3-bay; Georgian; gable roof with return eaves; Classical doorcase; 1 storey rear wing; John Palmer Sr. Originally stucco; additions. Original windows removed at point of designation.

For more information see designating by-law 138-99



10014 Yonge Street

Ward 4

**McCluskey Home**

Stucco; 1 storey bungalow; unknown date.



10023 Yonge Street

Ward 2

**Frances and Emily Page House**

Frame; stucco siding; 2 storeys; c1912; Foursquare. Winemaker building.





## 10027 Yonge Street Ward 2

### Dr. Duncumb's Hall DES

Brick; red, painted; 2 storeys; 1861(v); gable front with return eaves; Classical Revival; ½ -round window in gable; leaded glass; hip roof verandah, Tuscan columns on brick pedestals; brick rear 2 storey wing with shingled sunporch c1911 (v); Dr. Duncumb's Hall; Dr. John Duncumb; Lucy Nicholls and son, Hesse A. Nicholls, 1881-1960. Courtroom; Anglican church, 1864 to 1872.

For more information see designating by-law 11-13

## 10030 Yonge Street Ward 4

### St. Mary's Anglican Church WP

Brick; patterned buff/red; 1872(v); gable front; Gothic Revival; buttresses; central tower with patterned slate-clad steeple; parapet end walls; gable roof Gothic arch porch with recessed entry; Gothic windows with wooden mullions and leaded glass; St. Mary's Anglican Church. Spire built c1882. Arnold family burial located inside building.

## 10039 Yonge Street Ward 2

### Stanford Nursing Home WP

Frame; clapboard; 2 storeys; c1860; saltbox; Classic Ontario with drop finial, bargeboards in centre gable; 6/6 windows; Dr. J. Duncumb, for rental; Stanford Nursing Home, c1928. Porch added, 1977; B. Napier Simpson, architect.



**10057 Yonge Street**      **Ward 2**  
**Jacob Lunau House**      **WP**

Brick; white; painted; 1 ½ storeys;  
 c1914; Classic Ontario. Later date front  
 addition ; Jacob Lunau House.



**10058 Yonge Street**      **Ward 4**  
**Presbyterian Church Manse**      **WP**

Brick; patterned red/buff; 1 ½ storeys;  
 1876(v); L-shaped; Classic Ontario  
 facing north; transomed entrances;  
 segmental openings; canted bay  
 window with bracketed roof, almost  
 flat; bargeboards; vermiculated key  
 stone; flat-roofed front porch with  
 decorative fretwork; hip-roofed side  
 verandah with fretwork; "new"  
 Presbyterian manse. Side verandah  
 originally bellcast.



**10063 Yonge Street**      **Ward 2**  
**Matthew Carr House**

Brick; painted and partly angelstone; 2  
 storeys; c1870; 3-bay with projecting  
 centre bay; gable roof; brick 1 storey  
 rear wing; Dr. J. Duncumb, for rental;  
 Matthew Carr, 1880, poundkeeper.





## 10066 Yonge Street Ward 4 DES

### A. Richmond Hill Presbyterian Church

Brick; patterned red/buff; 1880(v); gable front; Gothic Revival; flat topped central tower with pierced metal balustrade, corner pinnacles, and louvred Gothic openings; paired Gothic windows; string courses; corbelling; stone copings; lead glass rose window; raised basement; buttresses; Richmond Hill Presbyterian Church. Addition to north, 1979; original balustrade had stepped parapet.



### B. Octagonal Vault & Cemetery

Brick; buff; 1 storey; c1863; octagonal; Gothic Revival; Gothic arched entry; raised quoins and door surround; octagonal lantern with Gothic louvred openings, colonettes and slender finial; Presbyterian cemetery vault. Restored in 1996. Cemetery markers are in slab, block and obelisk styles, made of white marble, limestone or granite; c1806; established on the property of Abner Miles, Richmond Hill's founder



For more information see designating by-law 5-93

## 10067 Yonge Street Ward 2

### Jennie Savage (Palmer) House

Brick; buff; 1 ½ storeys; c1890; gable front; traces of triangular pointed arch gable window; John Palmer Jr. for his daughter Jennie Savage. Addition to front; multiple rear additions.



## 10078 Yonge Street Ward 4

### Presbyterian Church Lot 4 House

Frame; clapboard; 2 storeys; c1850; 3-bay; hip roof; 6-panel doors; Church Lot #4. Originally 1 storey Ontario Cottage; roof raised c1950.

## 10088 Yonge Street Ward 4

### Francis McConaghy House & Shop

North wing: frame; brick-clad; 2 storeys; c.1865(v); gable front; Church Lot #2; leased to shoemaker, 1865, subject to house built within year; possibly James Hall. South wing: brick; 2 storeys; 1874(v); offset to west, perpendicular to north wing; residence for Francis McConaghy, shoemaker; McConaghy family until c1939. Numerous additions to rear; alterations to front obscure original character.

## 10094-10096 Yonge Street

Ward 4

### Store and House

Frame; clapboard; 1 ½ storeys; c1850; L-shaped with ell to rear; gable roof with centre gable on north elevation; Church Lot #1; possibly built by John and James Harrison, shoemakers; Jerry Smith, clock maker, 1909. Originally bargeboards in front gable; verandah replaced; alterations to front openings; 1 storey side wing added to south. Alex Scott, York Herald Publishing office.





## 10100 Yonge Street Ward 4

### **M.L. McConaghy Public School DES**

Brick; red; 2 storeys; 1914(v); Queen Anne Revival; pedimented frontispiece; hip roof; grouped 6/1 windows; fanlight over north door; datestone; Classical detailing; square belfry with pediments on all sides; designed by John L. Innes; Richmond Hill (M. L. McConaghy) Public School; built by William H. Graham. Opened Friday March 5 1915. Entrance obscured by 1 storey addition; other additions; McConaghy Centre. Site of Richmond Hill War Memorial Cenotaph.

For more information see designating by-law 62-85, amended by 24-88



## 10111 Yonge Street Ward 2

### **Standard Bank of Canada DES**

Brick; buff; 2 storeys; 1915(v); 3-bay; Edwardian Classical; flat brick pilasters on front; transomed entries, windows; pressed metal entablature; limestone details; corbelling; brick parapet; built by William H. Graham; Standard Bank. Formerly CIBC Bank.

For more information see designating by-law 86-99



## 10117-10119 Yonge Street

Ward 2

DES

### Trench's Carriage Works, Building B

Middle building: brick; reclad (front) and stucco; 3 storeys; 1878(v); flat roof; parapet. North building: brick, painted; 2 storeys; 1882(v); Multiple additions to rear.

For more information see designating by-law 102-99



## 10121-10123 Yonge Street

Ward 2

DES

### Trench's Carriage Works, Building C

North building: brick, painted; 2 storey; 1882(v). Multiple additions to rear.

For more information see designating by-law 102-99



## 10132 Yonge Street

Ward 4

### Lorne Block

DES

Frame; brick veneer; 2 storey; 1880 (v); Second Empire; mansard roof with multiple gable-roofed dormers; Lorne Block; built for John Palmer Jr.; engine house on ground floor; council chamber, meeting hall, and court room on 2nd floor. Originally patterned buff and red brick; ground floor altered.

For more information see designating by-law 357-90. amended by 452-91





## 10140 Yonge Street Ward 4

### Three Coins Restaurant

Sheet iron and neon tubing; 1955(v);  
Three Coins Open Kitchen sign;  
Richmond Hill's oldest restaurant still  
operating. Sign restored 1991.



## 10145 Yonge Street Ward 2

### Moses Ransom's Barber Shop

Brick red veneer; 2 storeys; c1913; flat  
roof; Moses Ransoms Barber Shop.



## 10155-10157 Yonge Street

Ward 2

DES

### Hewison-Skeelee House & Shop

(10155) Store: frame; stucco; 2  
storeys; c1849; front gable roof;  
projecting ground floor storefront;  
Robert Hewison, shoemaker. (10157)  
House: frame; stucco; 2 storey; forms  
an ell to rear of store; 1879(v); gable  
roof; A.L. Skeelee, watchmaker. Frame 2  
storey, gable-roofed rear addition, offset  
to north; frame 2 storey canted rear  
addition; frame, stucco, 1 storey, flat-  
roofed store added in ell, 1948.

For more information see designating by-law 26-11



## 10176-10178 Yonge Street

### Robinson Block

Ward 4

Brick; grey, painted; 2 storeys; flat roof; c1915; corbelled brick cornice; Robinson Block; first Dominion Store at north end.



## 10184 Yonge Street

Ward 4

### Old Post Office

DES

Brick; red, painted; 2 storeys; 1936(v); 3 bay; projecting frontispiece; stone belt courses and architraves; Richmond Hill Post Office; rare public building built during Edward VIII's reign; Forsey Page and Co., architects; Anglin Norcross Co., builders. Page and Steele Architects.

For more information see designating by-law 199-01



## 10185 Yonge Street

Ward 2

### Dominion Telegraph Building

DES

Buff-coloured brick; 2 storeys; 1877 (v); flat roof; Dominion Telegraph, 1871; first telegraph exchange in Richmond Hill. Telephone exchange, 1905. Storefront added to original residency by 1950s; apartment units added by 1977; clad in metal siding, 1985.

For more information see designating by-law 96-13





## 10201 Yonge Street Ward 2

### **Richmond Hill Methodist Church WP**

Brick; buff; 1880(v); cruciform; large southwest corner square tower, smaller northwest corner tower, both with metal-clad, conical broached spires; Gothic Revival; cruciform; Gothic windows with wooden mullions; coloured leaded glass; Gothic arched porch with recessed entry; rear auditorium; corbelling; datestone; stone copings; buttresses; raised brick voussoirs; almost intact interior; curved balcony; pews by Trench's Carriage Works; Methodist Church; Charles Walton, architect; James Burns (Markdale), builder. Now United Church.



## 10217 Yonge Street Ward 2

### **John Coulter's House and Shop**

Brick; painted, stuccoed, angelstone; 2 storeys; 1866(v); 3-bay; Georgian; gable roof with return eaves; 9/9 windows on upper storey; 1½ storey rear wing; 2 storey flat-roofed side wing, c1925; John Coulter, tailor. Multiple additions; lower floor renovated to stores.



## 10220 Yonge Street Ward 4

### **Wellman Block**

Frame; stucco; 2 storeys; c1920(v); hip roof, bracketed cornice over storefronts; J.W. Wellman, merchant.



## 10225 Yonge Street Ward 2

### The Fireproof Store

Brick; patterned red/buff, painted; 2 storeys 1866(v); flat roof; segmental windows; The Fireproof store; Parker Crosby, merchant. North half originally recessed, with 2 storey verandah with bellcast roof and treillage.



## 10231 Yonge Street Ward 2

### Reid-Hume House

WP

Timber frame; aluminum siding; 1 ½ storeys; c1846; gable front; return eaves (restored on front); William Reid, cabinetmaker; Alex Hume, Village Clerk, 1905-1945. Additions to rear.



## 10239 Yonge Street Ward 2

### Stark-Hart House

Timber frame; aluminum siding; 2 storeys; c1852; 3-bay; side hall; gable roof with return eaves; 8/12 upper windows; 2 storey hip roofed rear wing; Samuel Stark, shoemaker.





## 10243 Yonge Street Ward 2

### Frances M. Brown House

Frame; brick veneer, stucco; 2 storeys; c1915; side hall; Queen Anne Revival; gable front with return and pent eaves, wood shingled gable; shed roof verandah on Tuscan columns on brick pedestals; F. M. Brown. Rear addition.



## 10268 Yonge Street Ward 4

DES

### Richmond Hill High School/Old Town Hall

BP

Brick; red; 2 storeys; 1897(v); Gothic Revival; hip roof; central chimney; slate roof; centre gable with Gothic-arched recess; flagstaff base on gable peak with strapping; oriel window with leaded glass transoms; Richmond Hill High School; J. Francis Brown, architect; J. Kelly, mason; L. Innes and Sons, carpenters; town hall, 1932-1992. Additions 1956, 1961, 1971. Formerly known as 10266 Yonge Street.

For more information see designating by-law 22-89



## 10295 Yonge Street Ward 2

### St. Mary Immaculate Church

Brick, buff; 1967(v); polygonal contemporary design; copper roof; clerestory gable; open spire; St. Mary Immaculate Catholic Church.



## 10312 Yonge Street Ward 4

### Matthew McNair House DES

Frame; brick veneer, patterned red/buff; 1 ½ storeys; c1870; L-shaped; side hall; gable roof with return eaves; transomed entry with 4-panel door; segmental windows; partly enclosed bellcast verandah, 20<sup>th</sup> century; Matthew McNair, builder. Two 1 storey stores added to front.

For more information see designating by-law 57-15



## 10329 Yonge Street Ward 2

### Austin Maffey House

Frame; stucco; 2 storeys; c 1912 side hall; low-pitched hip roof. Rear one storey addition.



## 10350 Yonge Street Ward 4

### Andrew Newton House

Brick; dark red, painted; 2 storeys; c1895; side hall; irregular plan; Romanesque Revival; hip roof with gable-roofed extensions; ½-round attic window; transomed round-headed front window with stone voussoirs, keystone; panelled bargeboards; raised string course with diagonally inset bricks; terra cotta maple leaves at corners of small art glass window on south wall; Andrew Newton, tanner. Incorporated into 4 storey office building.





### 11181 Yonge Street Ward 2

#### **Loyal True Blue & Orange Home**DES

Brick; red; 2½ storeys; c1921; raised basement; U-shaped, rear facing; Neo-classical; Classical detailing; gable roof; hexagonal lantern; paired chimneys on gable ends; rear arms have, hip roofs; gable-roofed front dormers; transomed entry, Classical doorcase; 2 storey portico; Classical surrounds on 3 centre bay windows; Loyal True Blue & Orange Home; D.R. Franklin, architect; William H. Graham, builder; children's home.

For more information see designating by-law 116-14



### 11283 Yonge Street Ward 2

#### **William Wright House**

Brick; red; 1½ storeys; c1895; gable roof; T-shaped; segmental openings; art glass transoms over front windows; panelled bargeboards; enclosed hip roof verandah; brick, frame 1 storey rear wings; William Wright, farmer; Toll Road Antiques.



### 11339 Yonge Street Ward 2

#### **Sisters of St. Joseph College-L'Arche**

Frame; red brick veneer; 2 storeys; c1915; hip roof with hip-roofed dormers; south facing 2 storey verandah on Tuscan columns; sisters of St. Joseph College; Friends of L'Arche.



**11575 Yonge Street**      **Ward 2**  
**Jefferson Schoolhouse**      **DES**

Brick; red; 1 storey; 1868; Jefferson Schoolhouse.

For more information see designating by-law 149-82

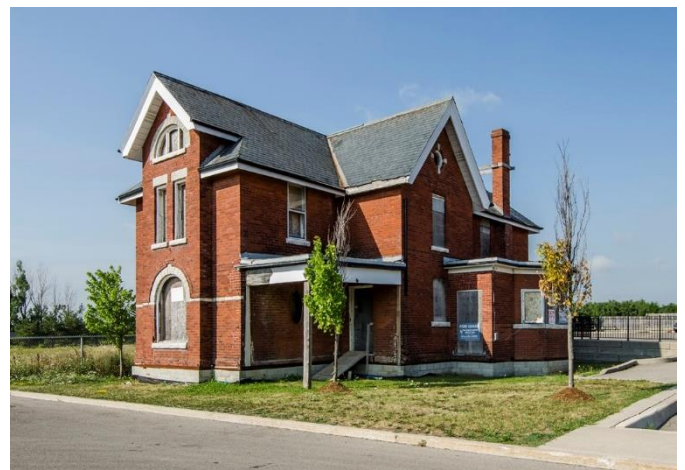
**11666 Yonge Street**      **Ward 4**  
**William H. Legge House/Jefferson**  
**Post Office**      **DES**

Brick; red; 2 storeys; c1890; side hall; Romanesque Revival; irregular plan; combined hip and gable roof; stone voussoirs, keystones on round-headed windows; stone lintels on flat-headed openings; circular and round-headed attic windows; leaded glass; William H. Legge. Small 1 storey side wing once served as Jefferson Post Office.

For more information see designating by-law 149-03

**11901 Yonge Street**      **Ward 2**  
**Summit Valley Golf & Country Club**  
**/ Fieldstone Cairn**

Frame; stucco, wood shingles; 1½ storeys; c1860; L-shaped; hip roof with shed-roofed front dormer; 2 storey square bay window; leaded glass; side bay window; 6/6 windows; frame 1 ½ storey rear wing with centre gable. Renovated c1920; Rocking Horse Ranch. Historical plaque of 1795 establishment of Yonge Street by Simcoe located on property.





**12001 Yonge Street      Ward 2**  
**Dentmore Downs: Joseph Mortson House**

Frame; stucco; 1½ storeys; c1860, possibly earlier; irregular plan, multiple gables; transomed entry with narrow sidelights; Tudor-arched windows; 6/6 windows; part of house thought to be log. 20th century alterations.

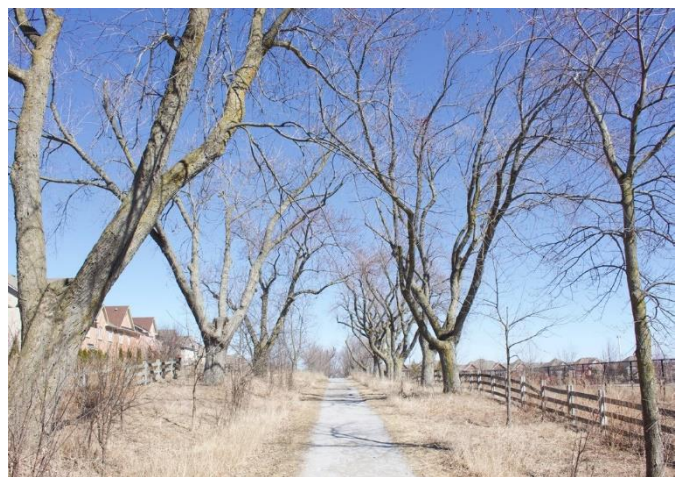
**12125 Yonge Street      Ward 2**  
**St. John the Baptist Anglican Church, Cemetery**

Frame; red brick clad; 1849(v); simple Gothic Revival; steep gable roof with bracketed eaves; gable-roofed belfry with pointed arches; buttresses; gable-roofed brick vestibule, chancel and side wing; lancet windows with pictorial leaded glass; rose window; St. John the Baptist Anglican Church. Originally clapboard with medium-pitched roof; major alterations c1865 and 1912.

**0 Shirrick Drive, 0 Windrow Street, 0 Yonge Street      Ward 1**  
**Drynoch Carriageway      DES**

Allée of silver maple trees planted in 10 metre intervals on north and south sides of former carriageway constructed by the Macleod Family; c1848. South of Yonge Street/Stouffville Road intersection.

For more information see designating by-law 89-17



## 12261 Yonge Street Ward 1

### Francis A. Legge House

Frame; red brick veneer; 2 storeys; c1920; 5-bay; 20th century Neo-classical; gable roof with shed-roofed dormers, return eaves; raised quoins; pedimented portico on Tuscan columns; entry with sidelights, fanlight; 6/1 windows; quarter-circle attic windows; stone accents; 2 storey sunroom side wing; 2 storey rear wing; Frank Legge.



## 12345 Yonge Street Ward 1

### Ryan-Paxton House

Frame; red brick veneer; 2 storeys; c1892(v); L-shaped; gable roof; circular attic window; brick 2 storey rear wing; Michael Ryan; Paxton family, descendants of M. Ryan. Enclosed hip-roofed verandah.



## 12485 Yonge Street Ward 1

### Metropolitan Railway Arrestor House

Brick; painted; 1 ½ storeys; c1899; gable roof with return eaves; brick pilasters; arrestor house for Radial Railway. Converted to dwelling. Remnants of power station for Metropolitan Radial Railway on property.





## 12500 Yonge Street Ward 1

Frame; stucco; 1 storey; c1910; rectangular plan with canted front wall and gable-roofed side wings; Tudor Revival/Arts and Crafts; gable roof with blind gable-roofed dormer; exposed shaped rafter ends and purlins; single, paired and triple multi-paned windows with brick sills; half-timbered front gable and dormer; partly enclosed wrap-around verandah. Rear 1 storey wing: frame; clapboard; on small stone foundation, side hill, garage. Possibly architect-designed summer home.



## 12461 Yonge Street Ward 1

### **John Beverly Robinson Cottage**

Frame; clapboard; 1½ storeys; c1836; 3-bay; Ontario Cottage; hip roof with bracketed eaves; gable and hip-roofed dormers. Frame 1 storey rear additions.



## 12761 Yonge Street Ward 1

### **J.H.C. Durham Cobblestone Cottage**

Cobblestone; 1 storey; c1922 (v); 3-bay; pyramid roof; 6/6 windows with stone sills; shed-roofed awning over front door with Arts & Crafts brackets; built by William H. Graham for J.H.C. Durham. Cobblestone fence across front of house; iron picket fence between stone piers.



## 12764 Yonge Street Ward 1

Frame; siding; 1 ½ storeys; c1920; gable roof; shed-roofed dormer; casement windows; shed-roofed porch on slender, grouped square posts.



## 12800 Yonge Street Ward 1 Mitchell House

Cobblestone and frame; 1 ½ storeys; c1922 (v); gable front; Arts and Crafts; gable roof with bracketed eaves; shed and gable-roofed side dormers; stone chimney; decorative half timbering. Formerly known as 12778 Yonge Street.



## 13200 Yonge Street Ward 1 DES

### Oak Ridges Public School Remnants

Associated historically to the development and growth of the Community of Oak Ridges; original structure demolished; c1914 school building east wall remnants as commemoration feature.

For more information see designating by-law 87-17

